

Washington State CWSRF & 319 Programs

Jeff Nejedly
WA Dept. of Ecology
&
Kitty Weisman
WA Dept. of Health



HELPING TO ENSURE SAFE AND RELIABLE DRINKING WATER

The Speakers and their Programs

- ◆ **Jeff Nejedly, Section Manager**
WA Dept. of Ecology

**Water Quality Financial Assistance Programs
CWSRF and 319 Funding (plus other funding)**

- ◆ **Kitty Weisman, Program Manager**
WA Dept. of Health

**Source Water Protection Program
DWSRF set asides and 106 Funding**

CWSRF & 319 in Washington State

💧 Emphasis on:

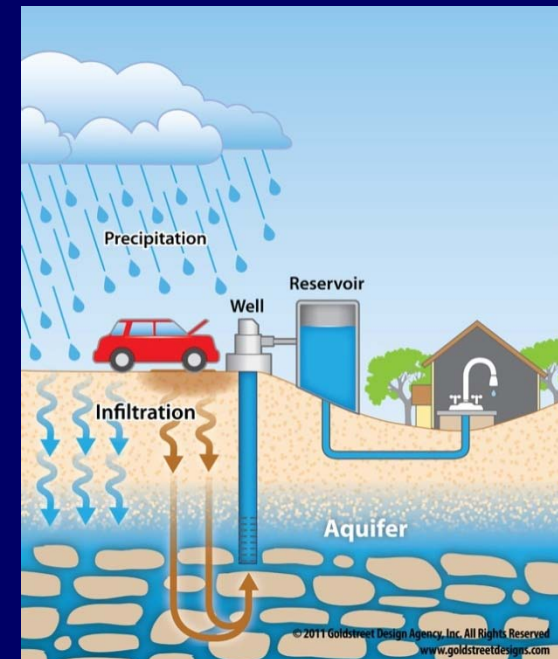
- Wastewater & stormwater infrastructure
- Nonpoint source pollution management
- Onsite septic repair & replacement

💧 Funding Program Features:

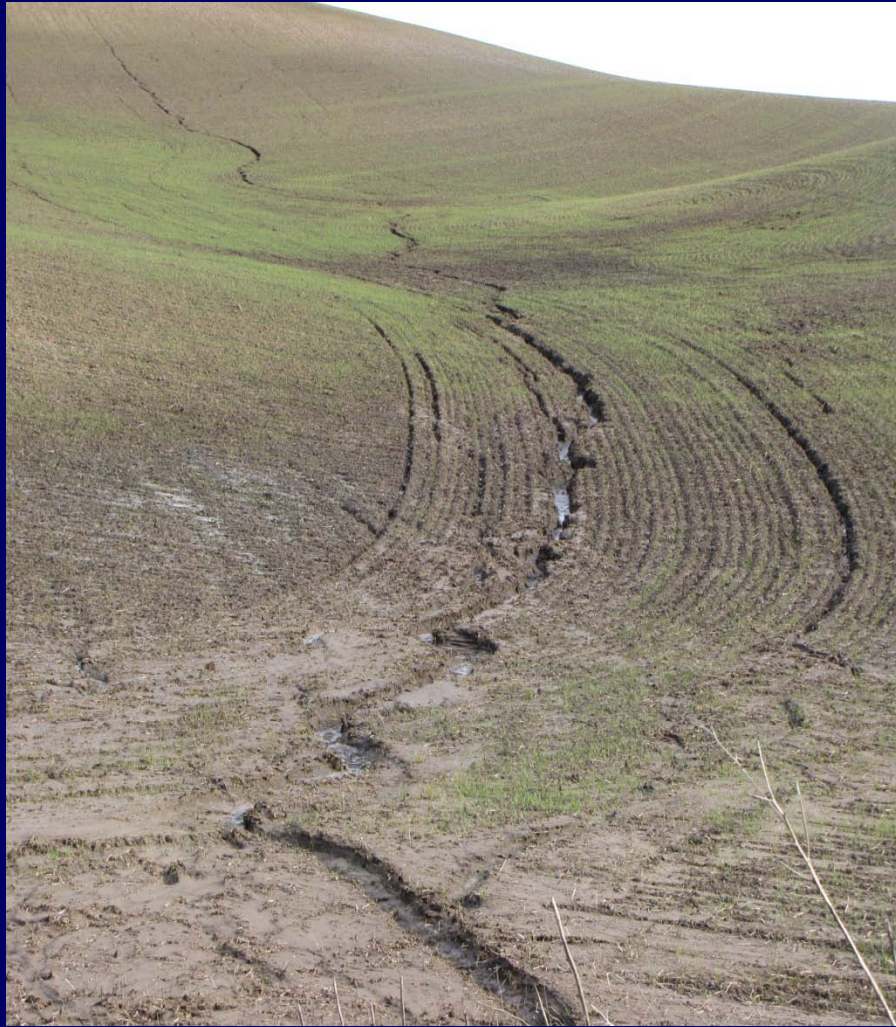
- One set of guidelines, one application
- One ranked funding list
- Leverages other funding sources

Source Water Protection Project Examples

- 💧 Direct seed/no-till local loan project
- 💧 Onsite septic repair & replacement local loan program
- 💧 Wastewater treatment, reclamation and aquifer recharge
- 💧 Nonpoint source pollution control



Direct Seed Project



Before (conventional seeding)



After (cross slot direct seeding)

Direct seed/No-Till

- ◆ **Direct seed local loan program operated by Spokane Conservation District**
- ◆ **Section 319 agricultural best management practice implementation focused on conversion of farming practices from tillage to direct seed/no-till**
 - **Now covering 14 eastern Washington counties**
 - **\$18 million in CWSRF loans since 1995, plus some grant \$**
- ◆ **Significant water quality protection**
 - **Reduction in sediment, nutrient, and pesticide runoff that impact surface water quality**
- ◆ **Benefits to farmer – reduced costs, improved yields over time**
- ◆ **Low cost loan terms for equipment purchase facilitates conversion to direct seed**

Onsite Sewage Repair & Replacement

- ❖ **Failing on-site sewage systems have been regularly identified as a source of surface and ground water contamination**
- ❖ **Local loan funds are usually established through county health departments**
- ❖ **Currently 9 counties participating in programs, most in Puget Sound area**
- ❖ **Many have been operating with CWSRF funding since 1995**
- ❖ **\$20 million in CWSRF loans, \$7 million in grants**
- ❖ **State grant funds were added in 2005 to address program barriers; cost of program management and administration; default risk; and to address residential hardship**

Water reclamation and aquifer recharge

- **City of Airway Heights wastewater treatment and reclamation facility**
- **ARRA Green Reserve based on aquifer recharge**
- **Project addresses nitrate contamination of groundwater due to failing on-site sewage systems, which will be replaced by the new sewer system**
- **Reclaimed water may be put to use in the future to offset current demands on groundwater withdrawal**

Nonpoint Source Pollution Abatement

- 💧 **Riparian buffers and stream restoration to preserve and restore water quality**
 - Keeping livestock out of waterways
- 💧 **Implementation of agricultural best management practices**
 - Manure management
- 💧 **Stormwater retrofit and low impact development**
 - WA State Legislative provisions have provided nearly \$100 million in funding over the past 4 years

Partnership & Coordination Efforts

- 💧 **Funding guidelines & application**
- 💧 **Proposal evaluation**
- 💧 **Dedicated funding – CWSRF 20% set-aside for nonpoint**
- 💧 **Information sharing**

Incentives for Applicants

- 💧 **Convey economic benefits up front**
- 💧 **Simplify application process**
- 💧 **Streamline contracting process**
- 💧 **Arrange for technical assistance**

Questions?



PUBLIC HEALTH
ALWAYS WORKING FOR A SAFER AND
HEALTHIER WASHINGTON

For more information

- ◆ **Jeff Nejedly, Program Manager**
Water Quality Financial Assistance Program
Washington State Department of Ecology
(360) 407-6566
[jne461@ecy.wa.gov](mailto:jnej461@ecy.wa.gov)

- ◆ **Kitty Weisman, Program Manager**
Source Water Protection Program
Washington State Department of Health
(360) 236-3114
Kitty.Weisman@doh.wa.gov