

# GROUND WATER PROTECTION COUNCIL

## SOURCE WATER WORKSHOP

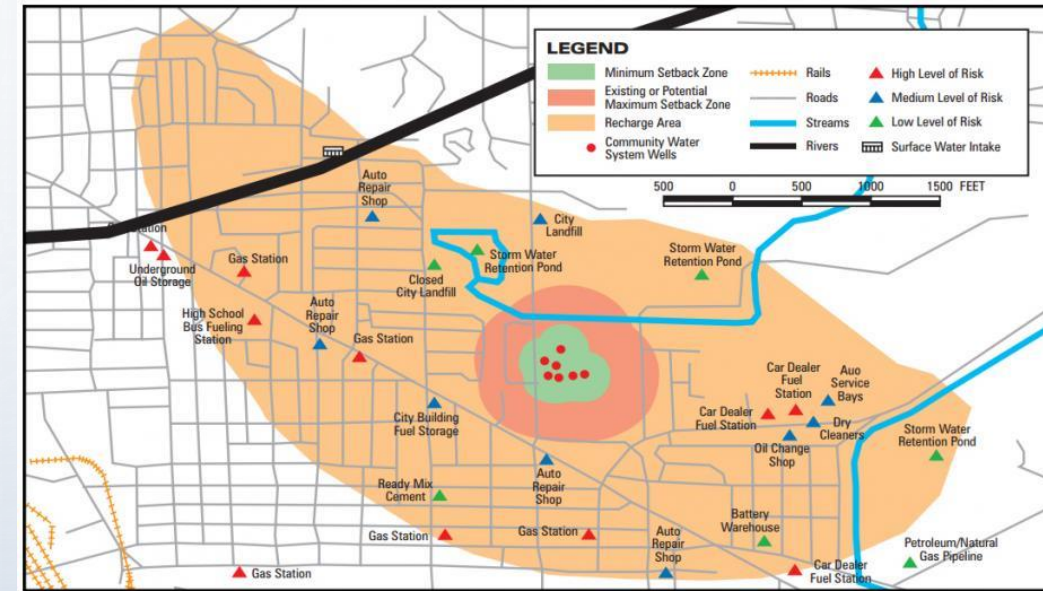
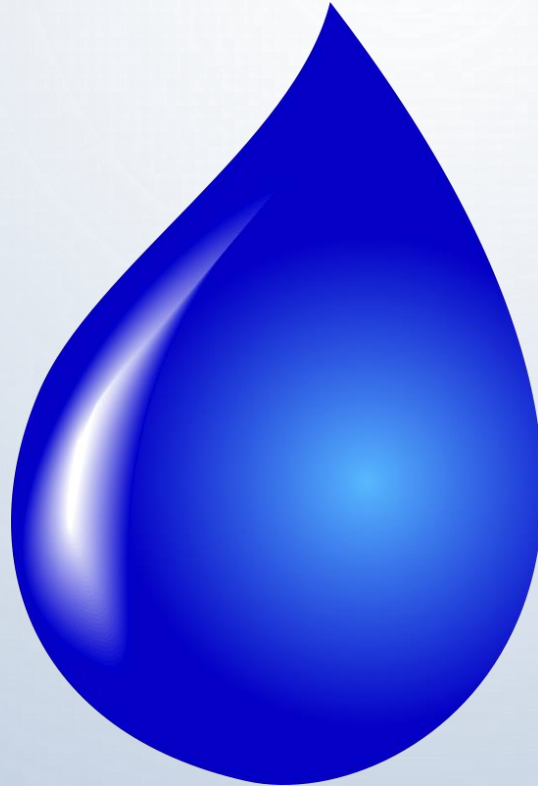
SHELLIECHARD

OKLAHOMA DEPARTMENT OF ENVIRONMENTAL QUALITY

SEPTEMBER 16, 2019



# HISTORICAL/TRADITIONAL SOURCE WATER PROTECTION

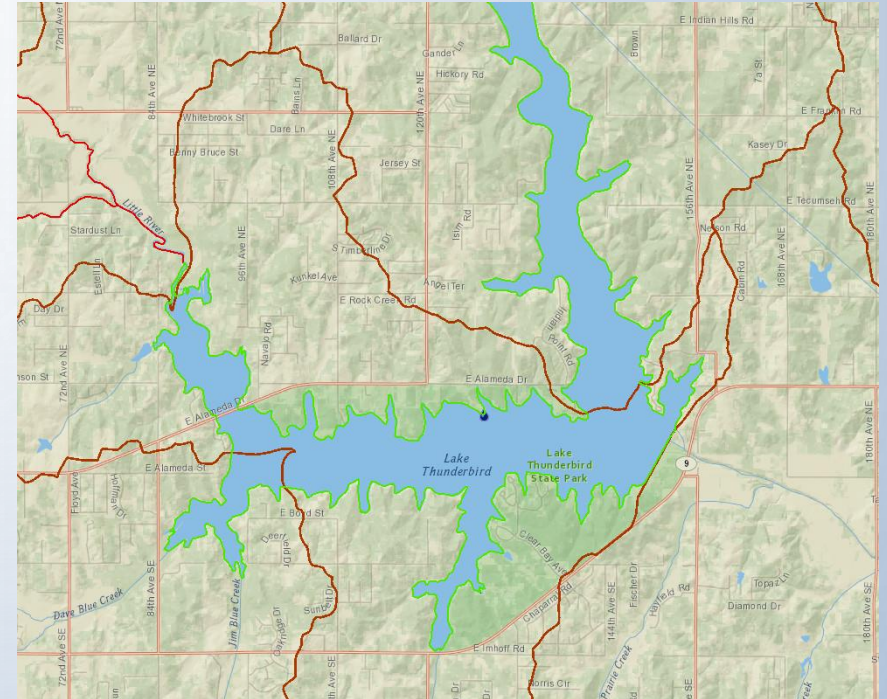


## Safe Drinking Water Act



# SOMETIMES OVER LOOKED

- SENSITIVE WATER SUPPLY PROTECTIONS
- OKLAHOMA WATER QUALITY STANDARDS
- TMDL
- MS4 PERMITS AND PROGRAMS
- CONSERVATION MEASURES
- NON-POINT SOURCE WATERSHED PLANNING



## Clean Water Act

# EMERGING

- NON-POTABLE REUSE
- INDIRECT POTABLE REUSE
- DIRECT POTABLE REUSE



## Water Reuse





# CONSEQUENCES OF FAILURE

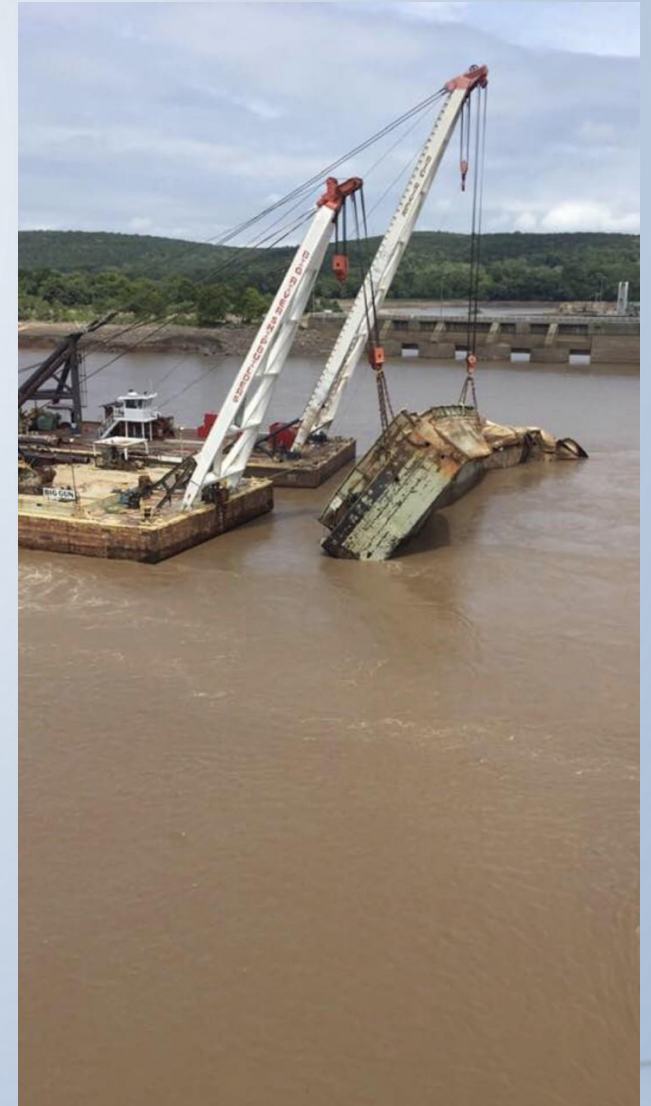
- HAB
- IMPAIRED WATER BODY USES
- DIMINISHED OUTDOOR WAY OF LIFE
- IMPACTED AGRICULTURE & ECONOMIC DEVELOPMENT
- PAST TREATMENT COSTS



\$\$\$

# EXTRA WATER

- INDUSTRIAL AND MUNICIPAL WASTEWATER CONTAMINANTS
- URBAN RUNOFF
- AGRICULTURE RUNOFF
- SUBMARINES
- BARGES LOADED WITH FERTILIZER





# BOTTOM LINE

IT'S ALL  
ONE WATER

WE ARE ALL IN IT TOGETHER

WATER IS THE  
DROP OF LIFE



STOP

Fasten  
Your  
Seat  
Belt

