

# Nebraska Groundwater Quality Clearinghouse

**Ryan Chapman**  
**[ryan.chapman@nebraska.gov](mailto:ryan.chapman@nebraska.gov)**  
**(402) 471-4227**

**NEBRASKA**  
Good Life. Great Resources.  

---

**DEPT. OF ENVIRONMENT AND ENERGY**

**David Miesbach**  
**[david.miesbach@nebraska.gov](mailto:david.miesbach@nebraska.gov)**  
**(402) 471-4982**

# Current: Quality-Assessed Agrichemical Database for Nebraska Groundwater (Clearinghouse)

- Started in 1998
- 495,297 analyses
- 241 agrichemicals
- Jointly funded: NDEE, NDoA, UNL/CSD (State's geologic survey)
- 30 data providers
  - 23 NRDs = state statute
  - PWS – SDWIS (incomplete)

Agency	
Central Platte NRD	Nebraska Department of Environmental Quality
Hastings Utilities	Nebraska Department of Health and Human Services
Lewis & Clark NRD	Nemaha NRD
Lincoln-Lancaster County Health Department	North Platte NRD
Little Blue NRD	Papio-Missouri River NRD
Lower Big Blue NRD	South Platte NRD
Lower Elkhorn NRD	Tri-Basin NRD
Lower Loup NRD	Twin Platte NRD
Lower Niobrara NRD	U.S. Geological Survey
Lower Platte North NRD	University of Nebraska
Lower Platte South NRD	Upper Big Blue NRD
Lower Republican NRD	Upper Elkhorn NRD
Middle Niobrara NRD	Upper Loup NRD
Middle Republican NRD	Upper Niobrara-White NRD
Nebraska Department of Agriculture	Upper Republican NRD

# Current: Quality-Assessed Agrichemical Database for Nebraska Groundwater (Clearinghouse)

If you would prefer, you may retrieve the entire [Clearinghouse Database](#).

It is a 12 MB Zipped Microsoft Access 2007 format.  
Database last updated: September/30/2019

Criteria Screening [Check Plot](#) Use this tool to develop a query and view the spatial distribution of wells meeting the selected criteria:

OR

Fill out the following form to specify your search criteria and then press the Submit button. All data meeting the search criteria will be listed (when the search is complete).

Proceed to obtain location, pedigree, and analytical data for each well meeting the criteria selected in #1-9.

## 1. Select Search Criteria:

- County
- NRD
- Well Location
- Agency Code
- Clearinghouse Number
- Registration Number

2. Select the Analyte(s) from the following list: The pesticide analytes are listed by chemical ingredient (e.g., atrazine, 2,4-D, acetochlor). If you know only the trade name (e.g., Roundup, Harness, Bladex\*\*), please exit to the [National Pesticide Information Retrieval System](#) to find the chemical ingredient.

\*\*Use of trade names on this site is for example only and does not constitute an endorsement.

To learn more about drinking water standards and regulations for these compounds, exit to the USEPA's [Drinking Water Health Advisories website](#).

Select Analyte(s) : Number of Analyses - 460405  
(Number) = number of analyses in database.

All  
1,1,1-trichloroethane (34)  
1,2,4-trichlorobenzene (35)  
1,2-dibromo-3-chloropropane (236)

3. Clearinghouse Quality Flag:(To learn more about how these data are ranked, refer to Tables 1 and 2 in the metadata link at the top of this page)  
(Use CTRL or SHIFT and Left Mouse button to select multiple items or deselect items. )

All  
1  
2  
3  
4  
5

## 4. Sample Data (as m/d/yyyy - Default is full period):

Specify Beginning Date  Specify End Date

## 5. Well Depth (Default is all records):

Specify Minimum Well Depth:   
Specify Maximum Well Depth:

## 6. Select the Well Type from the following list:

(Use CTRL or SHIFT and Left Mouse button to select multiple list items)

Select Well Use

All  
Commercial/Industrial  
Domestic  
Heat Pump (Ground Water Source)

## 7. Select the projection (if you want to use the data in a GIS system).

- None
- UTM (Zone 14, Nad 83, Meters)
- Lat/Long (Decimal Degrees)

## 8. Output Format:

- Import results to spreadsheet [Directions](#)
- Web Page Table : (a subset of the spreadsheet.)

## 9. Sorted By:NRD,County,Legal Description,Clearinghouse #. User Optional Sort Choices.

- Sample Date
- Contaminant Name
- Agency Code

## Ground Water Quality Data Query Results

### Selected By County:

Counties Selected : 'Antelope'

Analytes Selected: All

QualityFlag Selected: All

Minimum Depth Selected: All

Maximum Depth Selected: All

Well Use Selected: All

Projection of Location Points: UTM

Output Format: Spreadsheet

Sort Order: NRD, County, Legal Description, Clearinghouse#

Number of Records: 10062

Clearinghouse#	Township	Range	Direction	Section	SubSection	NRD	County	WellDepth	ScreenDepth	WellType	Contaminant	Date										
3216	23	5	W	4	00	Upper	Elkhorn	Antelope	228	152-227	I	acetochlor	07/15/1997	0	0.05	2	UN	G48831	56299	01/06/1976		
3216	23	5	W	4	00	Upper	Elkhorn	Antelope	228	152-227	I	alachlor	07/15/1997	0	0.05	2	UN	G48831	56299	01/06/1976		
3216	23	5	W	4	00	Upper	Elkhorn	Antelope	228	152-227	I	atrazine	07/15/1997	0	0.05	2	UN	G48831	56299	01/06/1976		
3216	23	5	W	4	00	Upper	Elkhorn	Antelope	228	152-227	I	butylate	07/15/1997	0	0.05	2	UN	G48831	56299	01/06/1976		
3216	23	5	W	4	00	Upper	Elkhorn	Antelope	228	152-227	I	cyanazine	07/15/1997	0	0.1	2	UN	G48831	56299	01/06/1976		
3216	23	5	W	4	00	Upper	Elkhorn	Antelope	228	152-227	I	deethylatrazine	07/15/1997	0	0.05	2	UN	G48831	56299	01/06/1976		
3216	23	5	W	4	00	Upper	Elkhorn	Antelope	228	152-227	I	deisopropylatrazine	07/15/1997	0	0.1	2	UN	G48831	56299	01/06/1976		
3216	23	5	W	4	00	Upper	Elkhorn	Antelope	228	152-227	I	EPTC	07/15/1997	0	0.05	2	UN	G48831	56299	01/06/1976		
3216	23	5	W	4	00	Upper	Elkhorn	Antelope	228	152-227	I	metolachlor	07/15/1997	0	0.05	2	UN	G48831	56299	01/06/1976		
3216	23	5	W	4	00	Upper	Elkhorn	Antelope	228	152-227	I	metribuzin	07/15/1997	0	0.05	2	UN	G48831	56299	01/06/1976		
3216	23	5	W	4	00	Upper	Elkhorn	Antelope	228	152-227	I	nitrate-N	07/01/1990	3.0	0.1	2	UENRD	G48831	56299	01/06/1976		
3216	23	5	W	4	00	Upper	Elkhorn	Antelope	228	152-227	I	nitrate-N	07/01/1991	3.3	0.1	2	49	UENRD	G48831	56299	01/06/1976	
3216	23	5	W	4	00	Upper	Elkhorn	Antelope	228	152-227	I	nitrate-N	07/03/1996	2.9	0.1	4	UENRD	G48831	56299	01/06/1976		
3216	23	5	W	4	00	Upper	Elkhorn	Antelope	228	152-227	I	nitrate-N	07/15/1997	3.2	0.1	2	UENRD	G48831	56299	01/06/1976		
3216	23	5	W	4	00	Upper	Elkhorn	Antelope	228	152-227	I	nitrate-N	07/12/1999	4.5	0.1	2	UENRD	G48831	56299	01/06/1976		
3216	23	5	W	4	00	Upper	Elkhorn	Antelope	228	152-227	I	nitrate-N	08/15/2000	3.9	0.1	3	UENRD	G48831	56299	01/06/1976		
3216	23	5	W	4	00	Upper	Elkhorn	Antelope	228	152-227	I	nitrate-N	08/19/2000	4.1	0.1	3	UENRD	G48831	56299	01/06/1976		
3216	23	5	W	4	00	Upper	Elkhorn	Antelope	228	152-227	I	nitrate-N	08/03/2004	5.7	0.1	3	UENRD	G48831	56299	01/06/1976		
3216	23	5	W	4	00	Upper	Elkhorn	Antelope	228	152-227	I	nitrate-N	07/14/2005	6.2	0.1	3	2005813	UENRD	G48831	56299	01/06/1976	
3216	23	5	W	4	00	Upper	Elkhorn	Antelope	228	152-227	I	nitrate-N	07/17/2006	5.9	0.1	3	2006386	UENRD	G48831	56299	01/06/1976	
3216	23	5	W	4	00	Upper	Elkhorn	Antelope	228	152-227	I	nitrate-N	07/06/2007	7.8	0.1	3	2007114	UENRD	G48831	56299	01/06/1976	
3216	23	5	W	4	00	Upper	Elkhorn	Antelope	228	152-227	I	nitrate-N	08/19/2008	5.6	0.1	3	2008438	UENRD	G48831	56299	01/06/1976	
3216	23	5	W	4	00	Upper	Elkhorn	Antelope	228	152-227	I	nitrate-N	08/19/2010	6.9	0.1	3	UENRD	G48831	56299	01/06/1976		
3216	23	5	W	4	00	Upper	Elkhorn	Antelope	228	152-227	I	nitrate-N	07/26/2011	5.5	0.1	3	UENRD	G48831	56299	01/06/1976		
3216	23	5	W	4	00	Upper	Elkhorn	Antelope	228	152-227	I	nitrate-N	06/15/2012	5.7	0.1	2	2012914	UENRD	G48831	56299	01/06/1976	
3216	23	5	W	4	00	Upper	Elkhorn	Antelope	228	152-227	I	nitrate-N	08/12/2013	5.4	0.1	2	2013597	UENRD	G48831	56299	01/06/1976	
3216	23	5	W	4	00	Upper	Elkhorn	Antelope	228	152-227	I	nitrate-N	07/21/2014	5.5	0.1	4	2014846	UENRD	G48831	56299	01/06/1976	
3216	23	5	W	4	00	Upper	Elkhorn	Antelope	228	152-227	I	nitrate-N	07/30/2015	3.7	0.1	4	2015190	UENRD	G48831	56299	01/06/1976	
3216	23	5	W	4	00	Upper	Elkhorn	Antelope	228	152-227	I	nitrate-N	07/14/2016	4.5	0.1	4	2016602	UENRD	G48831	56299	01/06/1976	
3216	23	5	W	4	00	Upper	Elkhorn	Antelope	228	152-227	I	nitrate-N	07/05/2017	3.9	0.1	4	2017625	UENRD	G48831	56299	01/06/1976	
3216	23	5	W	4	00	Upper	Elkhorn	Antelope	228	152-227	I	pendimethalin	07/15/1997	0	0.05	2	UN	G48831	56299	01/06/1976		
3216	23	5	W	4	00	Upper	Elkhorn	Antelope	228	152-227	I	promethrin	07/15/1997	0	0.1	2	UN	G48831	56299	01/06/1976		
3216	23	5	W	4	00	Upper	Elkhorn	Antelope	228	152-227	I	prometon	07/15/1997	0	0.05	2	UN	G48831	56299	01/06/1976		
3216	23	5	W	4	00	Upper	Elkhorn	Antelope	228	152-227	I	propachlor	07/15/1997	0	0.05	2	UN	G48831	56299	01/06/1976		
3216	23	5	W	4	00	Upper	Elkhorn	Antelope	228	152-227	I	propazine	07/15/1997	0	0.05	2	UN	G48831	56299	01/06/1976		
3216	23	5	W	4	00	Upper	Elkhorn	Antelope	228	152-227	I	simazine	07/15/1997	0	0.05	2	UN	G48831	56299	01/06/1976		
3216	23	5	W	4	00	Upper	Elkhorn	Antelope	228	152-227	I	trifluralin	07/15/1997	0	0.05	2	UN	G48831	56299	01/06/1976		
3095	23	5	W	5	BB	Upper	Elkhorn	Antelope	216	144-216	I	nitrate-N	07/18/1995	1.5	0.1	3	UENRD	G45049	52405	10/16/1976		
3095	23	5	W	5	BB	Upper	Elkhorn	Antelope	216	144-216	I	nitrate-N	08/12/1998	1.9	0.1	2	UENRD	G45049	52405	10/16/1976		
3095	23	5	W	5	BB	Upper	Elkhorn	Antelope	216	144-216	I	nitrate-N	08/15/2000	1.9	0.1	3	UENRD	G45049	52405	10/16/1976		
3095	23	5	W	5	BB	Upper	Elkhorn	Antelope	216	144-216	I	nitrate-N	07/25/2003	2.1	0.1	3	UENRD	G45049	52405	10/16/1976		

# Quality-Assessed Agrichemical Database for Nebraska Groundwater (Clearinghouse)

- Problem – Process, Structure, Interaction
  - Time and effort to submit and qualify data
  - Microsoft Access
  - Limited to agrichemical data
  - PWS data after 9/11
  - Not able to easily view the data and context
  - Partner with NGWMN
- Solution – Database & Process Update
  - Change from Microsoft Access to SQL
  - Store on secure state system or in the cloud with redundancy/automatic backups
  - Simplify the process of adding and quality assessing new data to save time & money
  - Build capacity for direct user uploads into the database from across the state
  - Assist with database administration succession planning
  - Migrate the public web interface of the database from NeDNR to NDEQ or the cloud
  - **Include field measures, primary constituents, aquifer information, ect.**
  - Communicate with other databases: water levels, registered wells, vadose zone, NRD specific, ect.

# New: Nebraska Groundwater Quality Clearinghouse

- More than just Agrichemicals – 281 (added 40)
- Filters
- Interactive map
- Statistics
- Release date end of 2020
- Includes:
  - SDWIS
  - USGS – NWIS
- Structure for NGWMN
- Funding
  - 106 Monitoring Initiative
  - USGS - NGWMN

Nebraska Groundwater Quality Clearinghouse This is a non-production environment

Well Explorer  
Sample Result Explorer  
This search will produce 936865 results.

Analyte/CAS #: Select Multiple...

USGS Grouping: Select Multiple...

Pesticide Sub-Grouping: Select Multiple...

Sample Detail

Filter for Most Recent Sample Results?

Sample Date: [ ]

Concentration: [ ]

Submitting NRD or Agency: Select Multiple...

Exclude Special Studies: Select Multiple...

Analytical Method

Analytical Method ID-System: Select Multiple...

Maximum Contaminant Level (MCL)

Aggregate Nitrate Chart All Time

Map

Well Explorer

Clearinghouse Number	DNR Registration Number	DNR Well ID	Well Type	County	NRD	Township Range Section	Latitude (NAD83)	Longitude (NAD83)
3	G80540	89196	Irrigation	Adams	Little Blue	7N 9W 22	40.5642650929	-98.330777612
6	G80920	89576	Irrigation	Adams	Little Blue	7N 10W 7	40.58617	-98.48233
7	G81130	89785	Domestic	Adams	Little Blue	7N 10W 5	40.59894	-98.46106
9	G81236	89891	Irrigation	Adams	Little Blue	5N 11W 23	40.3903422954573	-98.520246069071

### Sample Result Explorer

Applied Filters:

Clearinghouse Number	Sample Date	Analyte/CAS #	Conc
<a href="#">522103</a>	2019/10/29	tetrachloroethene (CAS #: 127-18-4)	0.69
<a href="#">522103</a>	2019/10/29	naphthalene (CAS #: 91-20-3)	0
<a href="#">522103</a>	2019/10/29	1,2-dichloroethane (CAS #: 107-06-2)	0
<a href="#">522103</a>	2019/10/29	1,4-dichlorobenzene (CAS #: 106-46-7)	0
<a href="#">522103</a>	2019/10/29	1,2-dibromo-3-chloropropane (CAS #: 96-12-8)	0
<a href="#">522103</a>	2019/10/29	1,2,4-trichlorobenzene (CAS #: 120-82-1)	0
<a href="#">522103</a>	2019/10/29	bromomethane (CAS #: 74-83-9)	0
<a href="#">522103</a>	2019/10/29	1,2-dibromoethane (ethylene dibromide) (CAS #: 106-93-4)	0
<a href="#">522103</a>	2019/10/29	trans-1,3-dichloropropene (CAS #: 10061-02-6)	0
<a href="#">522103</a>	2019/10/29	carbon tetrachloride (CAS #: 56-23-5)	0

< >

⏪ ⏩ 936865 Total Results | Page 1 of 93687

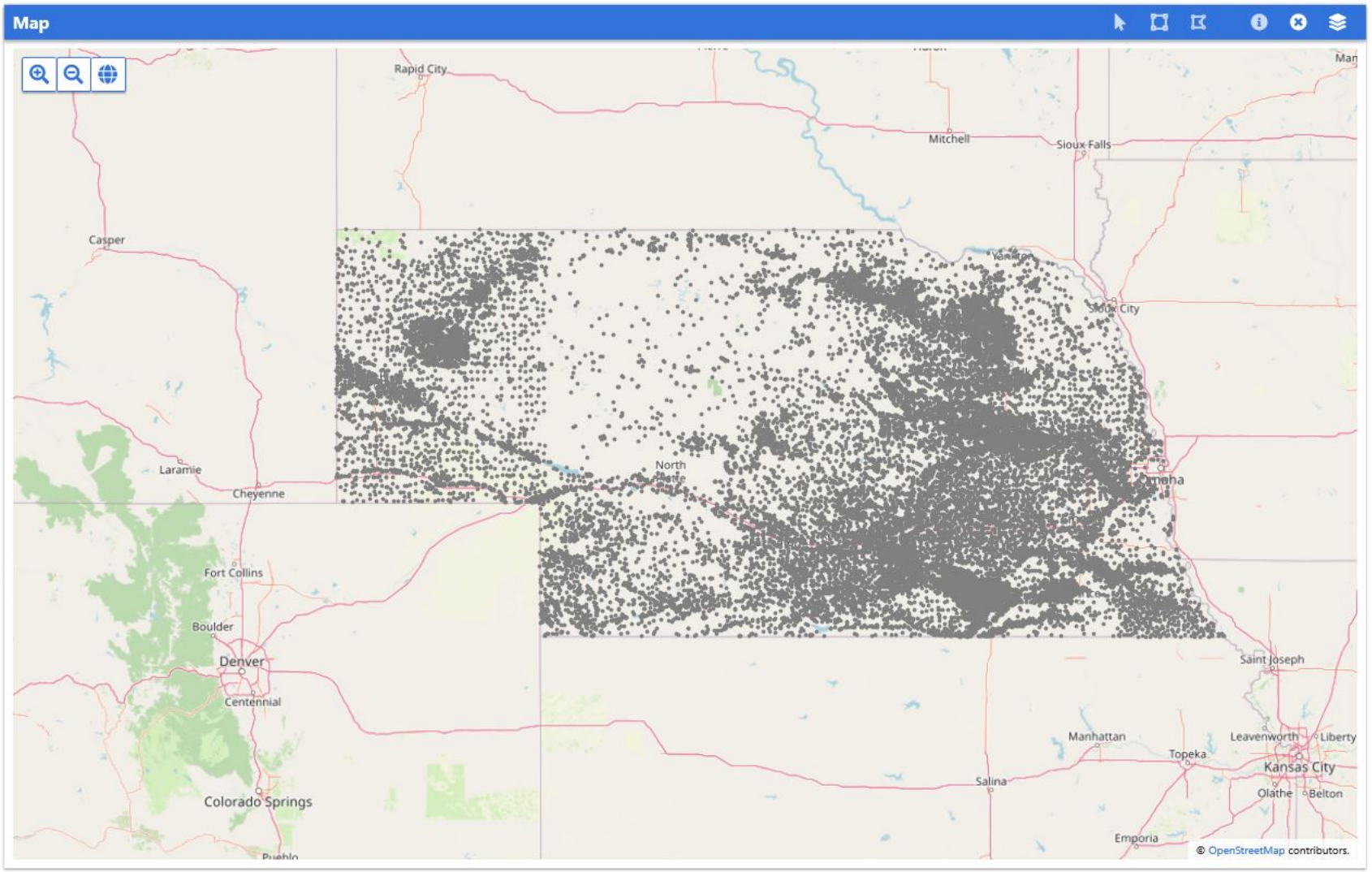
| Go to page:  Show 10 ▾

### Aggregate Nitrate Chart

All Time ▾

No Wells Selected

Select up to 2100 wells to generate aggregate statistics



### Well Explorer

Applied Filters:

Clearinghouse Number	DNR Registration Number	DNR Well ID	Well Type	County	NRD	Township Range Section	Latitude (NAD83)	Longitude (NAD83)
<a href="#">3</a>	G80540	89196	Irrigation	Adams	Little Blue	7N 9W 22	40.5642650929	-98.330777612
<a href="#">6</a>	G80920	89576	Irrigation	Adams	Little Blue	7N 10W 7	40.58617	-98.48253
<a href="#">7</a>	G81130	89785	Domestic	Adams	Little Blue	7N 10W 5	40.59894	-98.46106
<a href="#">9</a>	G81236	89891	Irrigation	Adams	Little Blue	5N 11W 23	40.3903422954573	-98.5202460696071

# DEMO



This search will produce 936865 results.

### Analyte

Analyte/CAS #:

USGS Grouping:

Pesticide Sub-Grouping:

### Sample Detail

Filter for Most Recent Sample Results?

Sample Date:

Concentration:

# Filter by Sample

Submitting NRD or Agency:

Exclude Special Studies:

### Analytical Method

Analytical Method ID-System:

### Maximum Contaminant Level (MCL)

Analyte/CAS #:

% of MCL:

Apply Filter

Clear All Filters

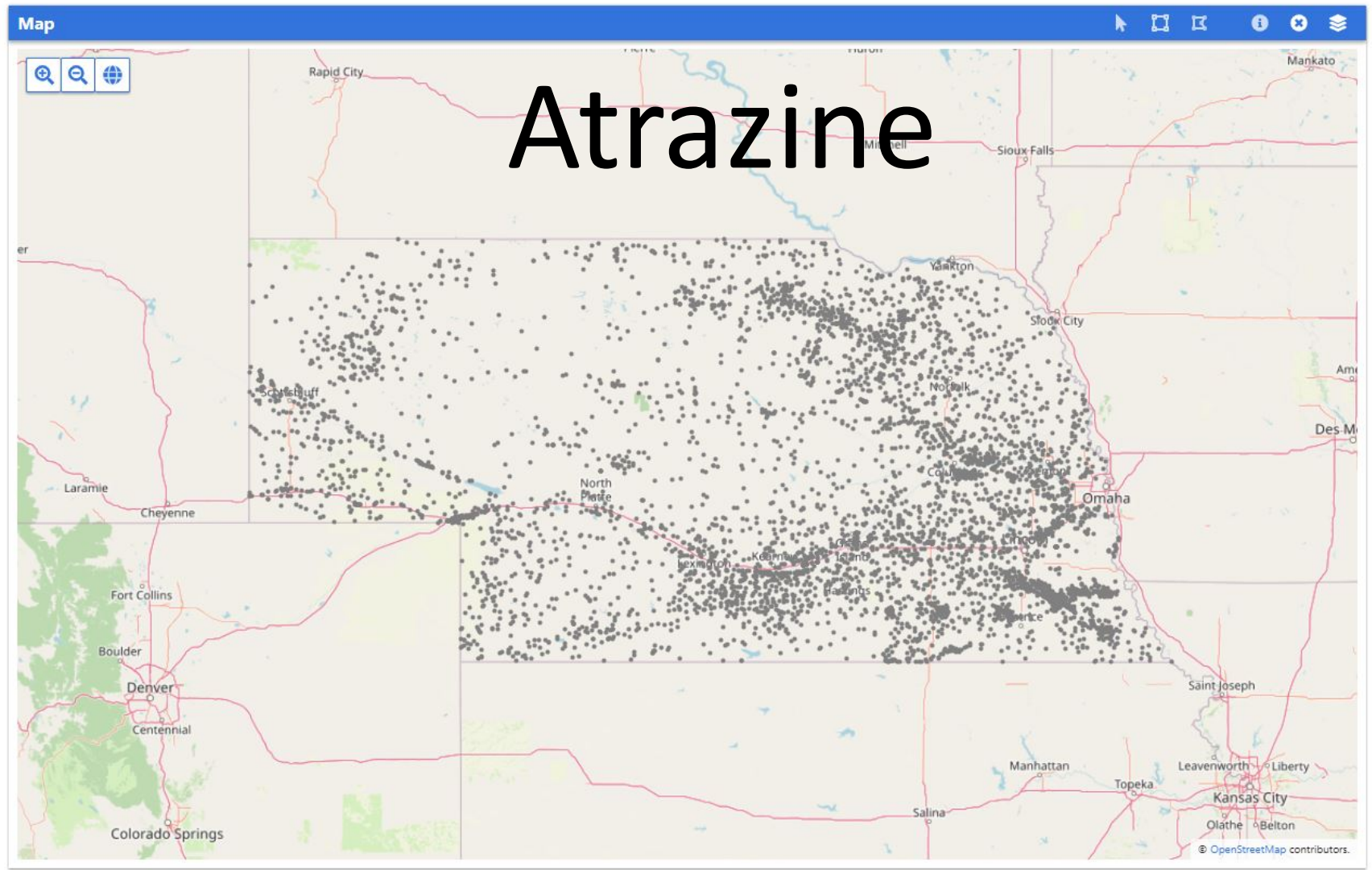
### Sample Result Explorer

Applied Filters: Analyte/CAS # = atrazine (CAS #: 1912-24-9)

Clearinghouse Number	Sample Date	Analyte/CAS #	Concentration	Units	% of M
<a href="#">522220</a>	2019/10/07	atrazine (CAS #: 1912-24-9)	0	ug/L	0
<a href="#">521425</a>	2019/10/02	atrazine (CAS #: 1912-24-9)	0	ug/L	0
<a href="#">522273</a>	2019/09/18	atrazine (CAS #: 1912-24-9)	0	ug/L	0
<a href="#">522612</a>	2019/09/09	atrazine (CAS #: 1912-24-9)	0	ug/L	0
<a href="#">521682</a>	2019/09/09	atrazine (CAS #: 1912-24-9)	0	ug/L	0
<a href="#">521455</a>	2019/09/09	atrazine (CAS #: 1912-24-9)	0	ug/L	0
<a href="#">522789</a>	2019/09/08	atrazine (CAS #: 1912-24-9)	0	ug/L	0
<a href="#">522741</a>	2019/09/03	atrazine (CAS #: 1912-24-9)	0	ug/L	0
<a href="#">522734</a>	2019/09/03	atrazine (CAS #: 1912-24-9)	0	ug/L	0
<a href="#">522560</a>	2019/09/03	atrazine (CAS #: 1912-24-9)	0	ug/L	0
<a href="#">522546</a>	2019/09/03	atrazine (CAS #: 1912-24-9)	0	ug/L	0
<a href="#">522543</a>	2019/09/03	atrazine (CAS #: 1912-24-9)	0	ug/L	0
<a href="#">522471</a>	2019/09/03	atrazine (CAS #: 1912-24-9)	0	ug/L	0
<a href="#">522184</a>	2019/09/03	atrazine (CAS #: 1912-24-9)	0	ug/L	0
<a href="#">521886</a>	2019/09/03	atrazine (CAS #: 1912-24-9)	0	ug/L	0
<a href="#">521621</a>	2019/09/03	atrazine (CAS #: 1912-24-9)	0	ug/L	0
<a href="#">521607</a>	2019/09/03	atrazine (CAS #: 1912-24-9)	0	ug/L	0
<a href="#">521606</a>	2019/09/03	atrazine (CAS #: 1912-24-9)	0	ug/L	0
<a href="#">522275</a>	2019/08/30	atrazine (CAS #: 1912-24-9)	0	ug/L	0
<a href="#">522578</a>	2019/08/29	atrazine (CAS #: 1912-24-9)	0	ug/L	0
<a href="#">522730</a>	2019/08/27	atrazine (CAS #: 1912-24-9)	0	ug/L	0
<a href="#">522532</a>	2019/08/27	atrazine (CAS #: 1912-24-9)	0	ug/L	0
<a href="#">522267</a>	2019/08/27	atrazine (CAS #: 1912-24-9)	0	ug/L	0
<a href="#">522853</a>	2019/08/26	atrazine (CAS #: 1912-24-9)	0	ug/L	0
<a href="#">522283</a>	2019/08/26	atrazine (CAS #: 1912-24-9)	0	ug/L	0
<a href="#">522067</a>	2019/08/26	atrazine (CAS #: 1912-24-9)	0	ug/L	0

30012 Total Results | Page 1 of 601

Go to page:  Show 50 ▾



### Well Explorer

Applied Filters:

Clearinghouse Number	DNR Registration Number	DNR Well ID	Well Type	County	NRD	Township Range Section	Latitude (NAD83)	Longitude (NAD83)
<a href="#">331</a>	G3782	7555	Irrigation	Adams	Upper Big Blue	8N 9W 11	40.6784320578358	-98.3139529967119
<a href="#">336</a>	G4005 1R	7822	Irrigation	Adams	Upper Big Blue	8N 10W 25	40.62970729	-98.3966131017
<a href="#">652</a>	G16410 1R	22162	Irrigation	Adams	Upper Big Blue	7N 9W 12	40.5841020471	-98.2853150304
<a href="#">952</a>	G24358	30839	Irrigation	Adams	Upper Big Blue	8N 10W 15	40.6859395687	-98.472997031





# Map Layers

The image shows a screenshot of a map application's layers panel. The panel is titled 'Layers' and is divided into two main sections: 'Clearinghouse Wells' and 'Basemap Layers'. The 'Clearinghouse Wells' section includes a checked 'Point' layer and an unchecked 'Most Recent Nitrate Concentrations' layer. The 'Basemap Layers' section lists various geographic and environmental layers, each with an unchecked checkbox and a small icon representing the layer's appearance. The layers are: NAIP 2018, NAIP 2010, Township/Range, Section, County, NRD, DNR Wells, Topographic Regions, High Plains Aquifer, Ogallala Group, Bedrock Geology, CSD Test Holes, Soils Ksat NRCS, Aquifer Vulnerability (DRASTIC Method), Depth to Groundwater, TR Median NO3 Concentration, and TR Median NO3 Sample Count. The last two layers have information icons (i) next to their checkboxes. The panel is set against a background of a map showing a landscape with a river and some buildings.

**Layers**

**Clearinghouse Wells**

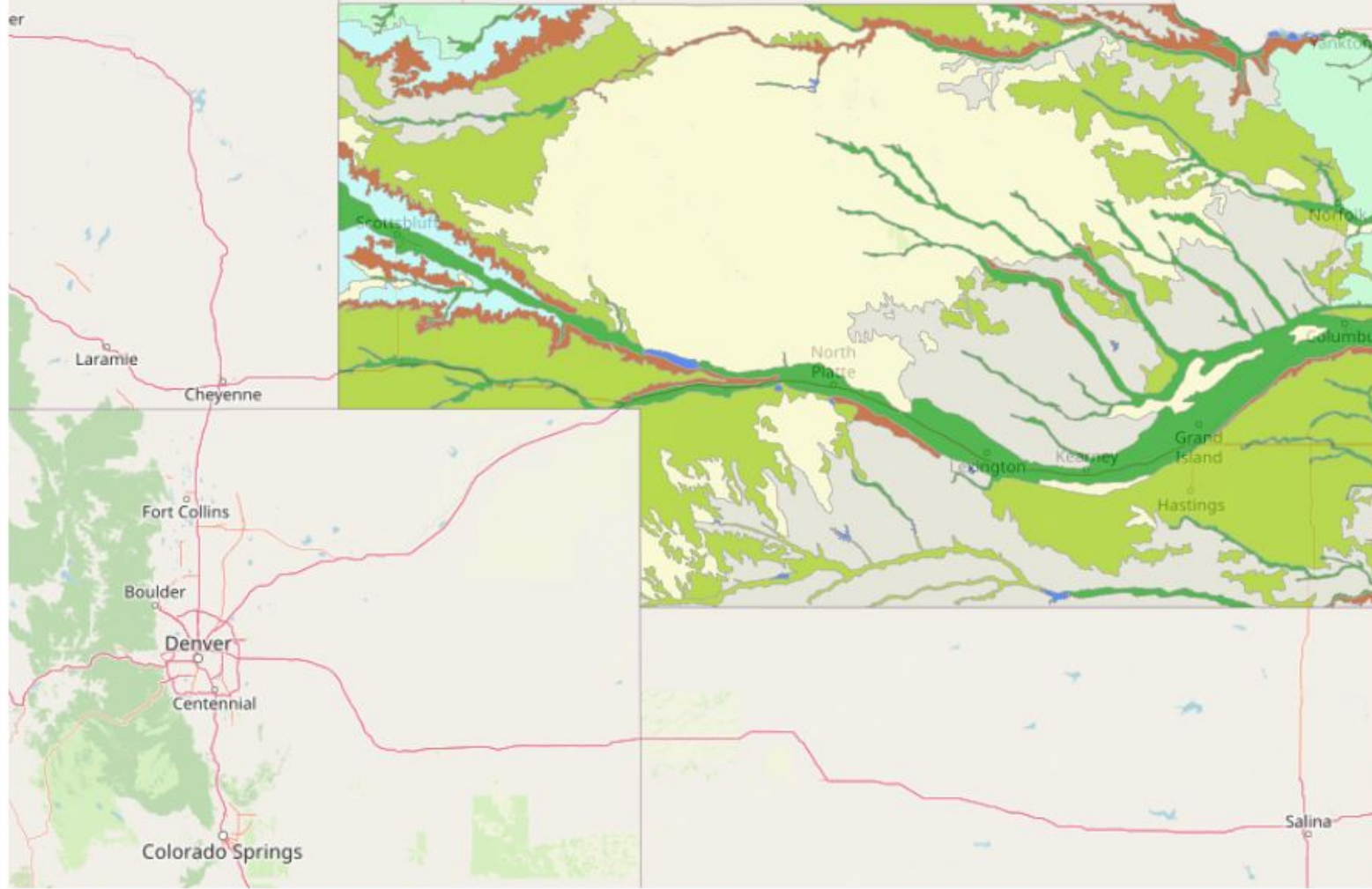
- Point
- Most Recent Nitrate Concentrations

**Basemap Layers**

- NAIP 2018
- NAIP 2010
- Township/Range
- Section
- County
- NRD
- DNR Wells
- Topographic Regions
- High Plains Aquifer
- Ogallala Group
- Bedrock Geology
- CSD Test Holes
- Soils Ksat NRCS
- Aquifer Vulnerability (DRASTIC Method)
- Depth to Groundwater
- TR Median NO3 Concentration
- TR Median NO3 Sample Count



# Topographic Regions



## Layers

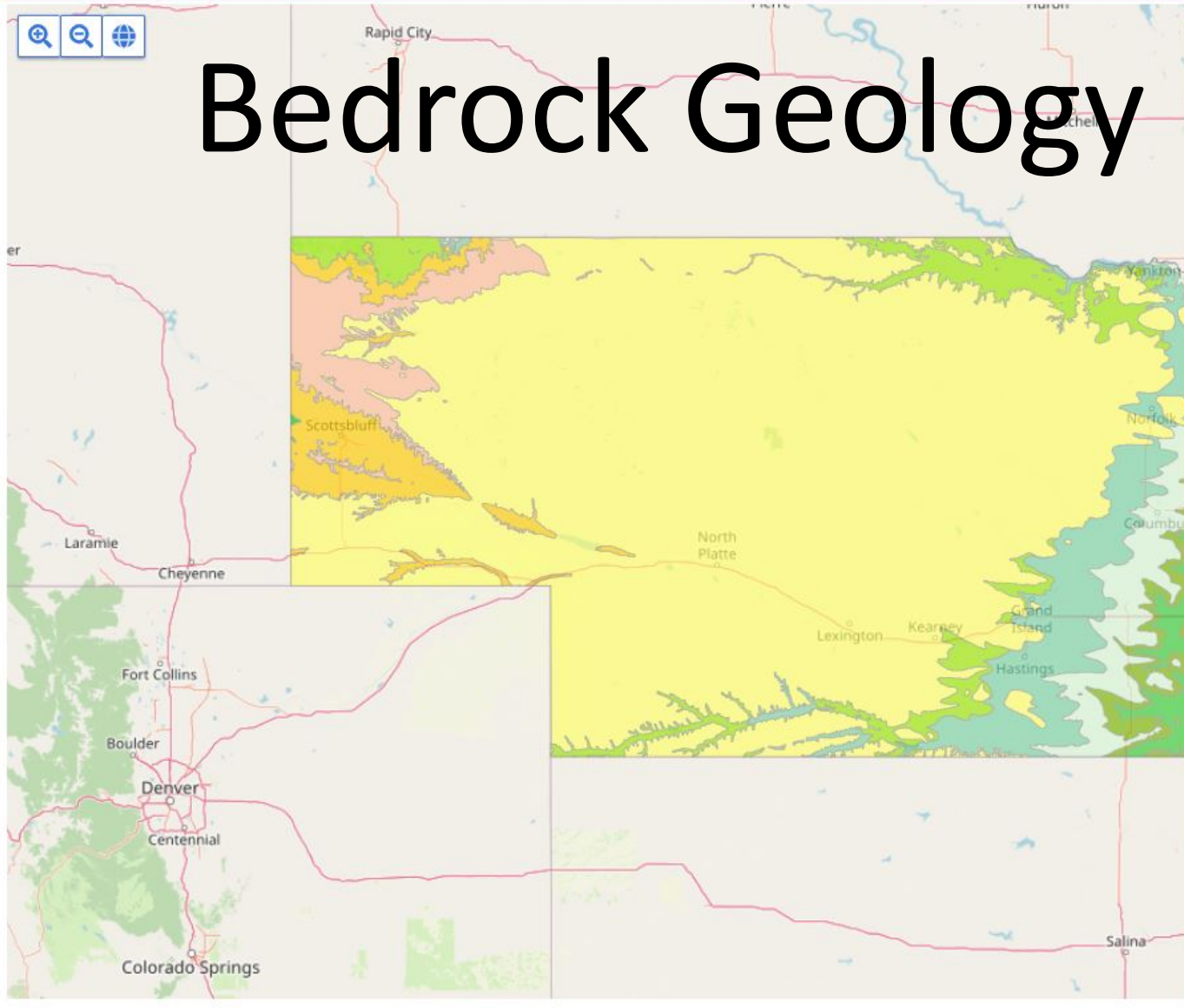
### Clearinghouse Wells

- Point
- Most Recent Nitrate Concentrations

### Basemap Layers

- NAIP 2018
- NAIP 2010
- Township/Range
- Section
- County
- NRD
- DNR Wells
- Topographic Regions
  - Sandhills
  - Sand Dunes
  - Dissected Plains
  - Bluffs and Escarpments
  - Rolling Hills
  - Plains
  - Valleys
  - Valley-side Slopes
  - Large Reservoirs
- High Plains Aquifer
- Ogallala Group
- Bedrock Geology
- CSD Test Holes
- Soils Ksat NRCS
- Aquifer Vulnerability (DRASTIC Method)

# Bedrock Geology



**Layers**

**Clearinghouse Wells**

- Point
- Most Recent Nitrate Concentrations

**Basemap Layers**

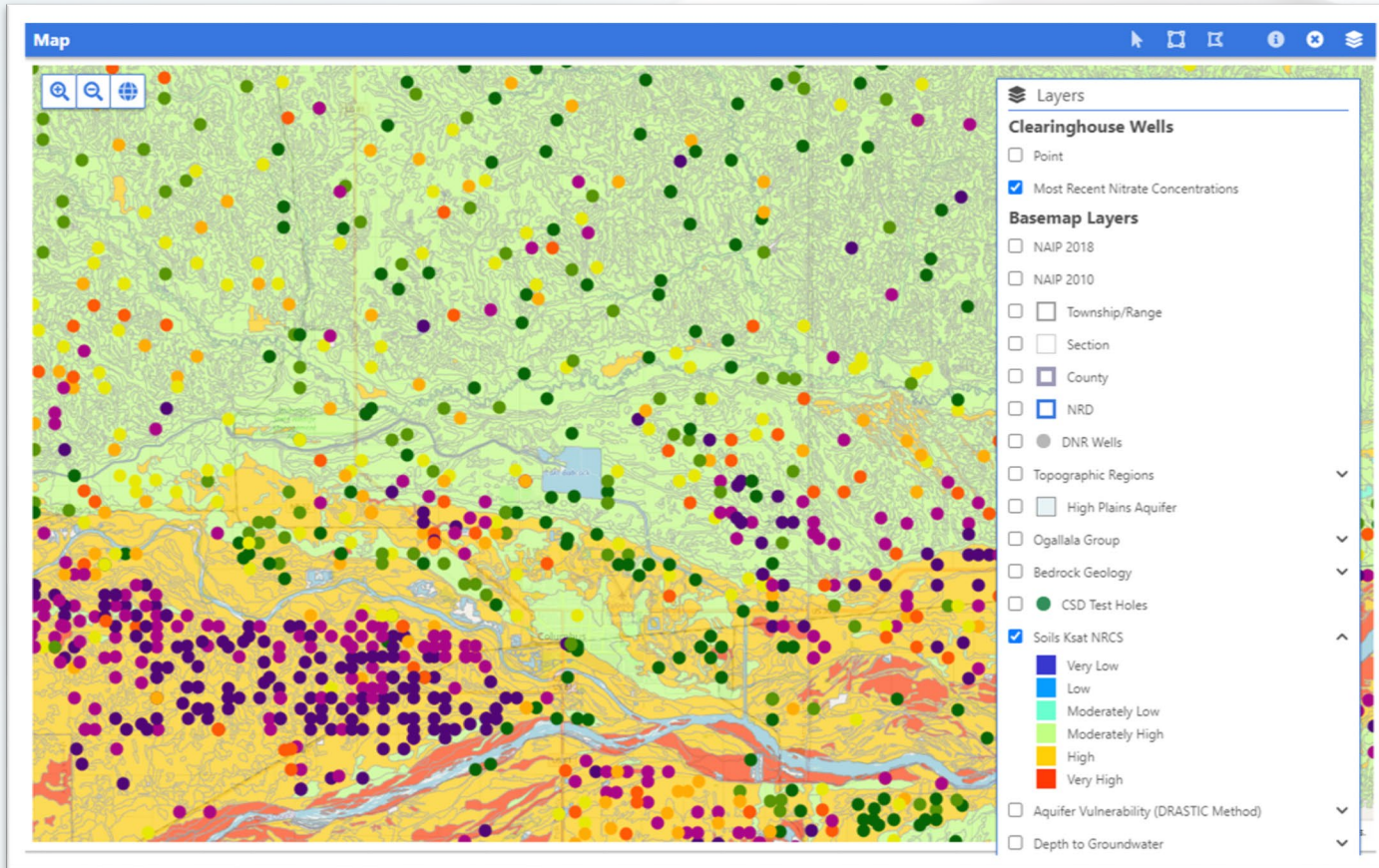
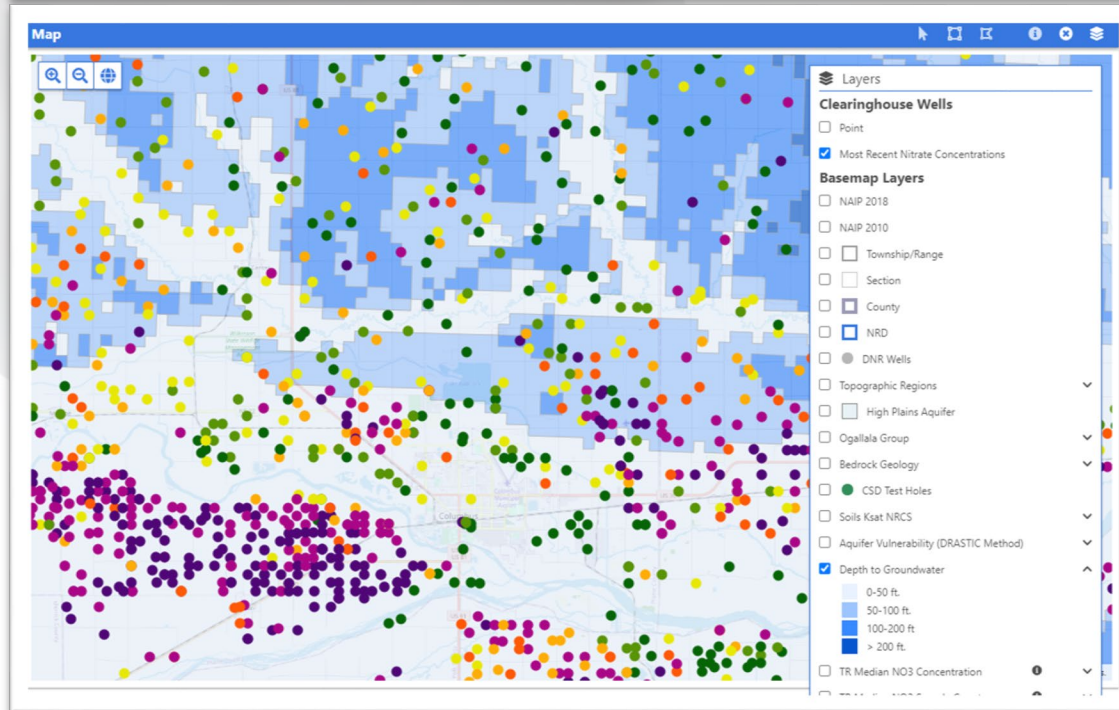
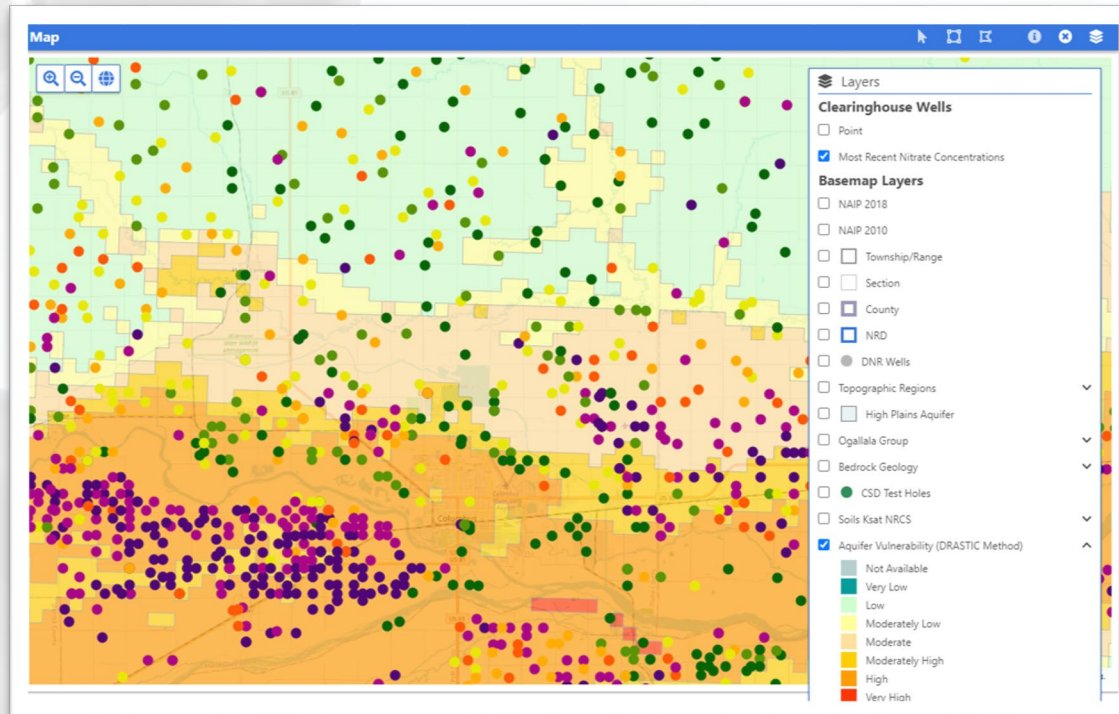
- NAIP 2018
- NAIP 2010
- Township/Range
- Section
- County
- NRD
- DNR Wells
- Topographic Regions
- High Plains Aquifer
- Ogallala Group
  - Ogallala
  - Bedrock Geology
    - Ogallala
    - Arikaree
    - White River
    - Fox Hills
    - Pierre
    - Niobrara
    - Carlile
    - Greenhorn-Graneros
    - Dakota
    - Chase
    - Council Grove
    - Admire
    - Wabaunsee
    - Shawnee
    - Douglas
    - Lansing
    - Kansas City
    - Marmaton

**Well Explorer**

Applied Filters:

Clearinghouse Number	DNR Registration Number	DNR Well ID	Well Type	County	NRD	Township Range Section
331	G3782	7555	Irrigation	Adams	Upper Big Blue	8N 9W 11

# Vulnerability



# Mapping Tools



 Reset All Filters

Export Filter Results

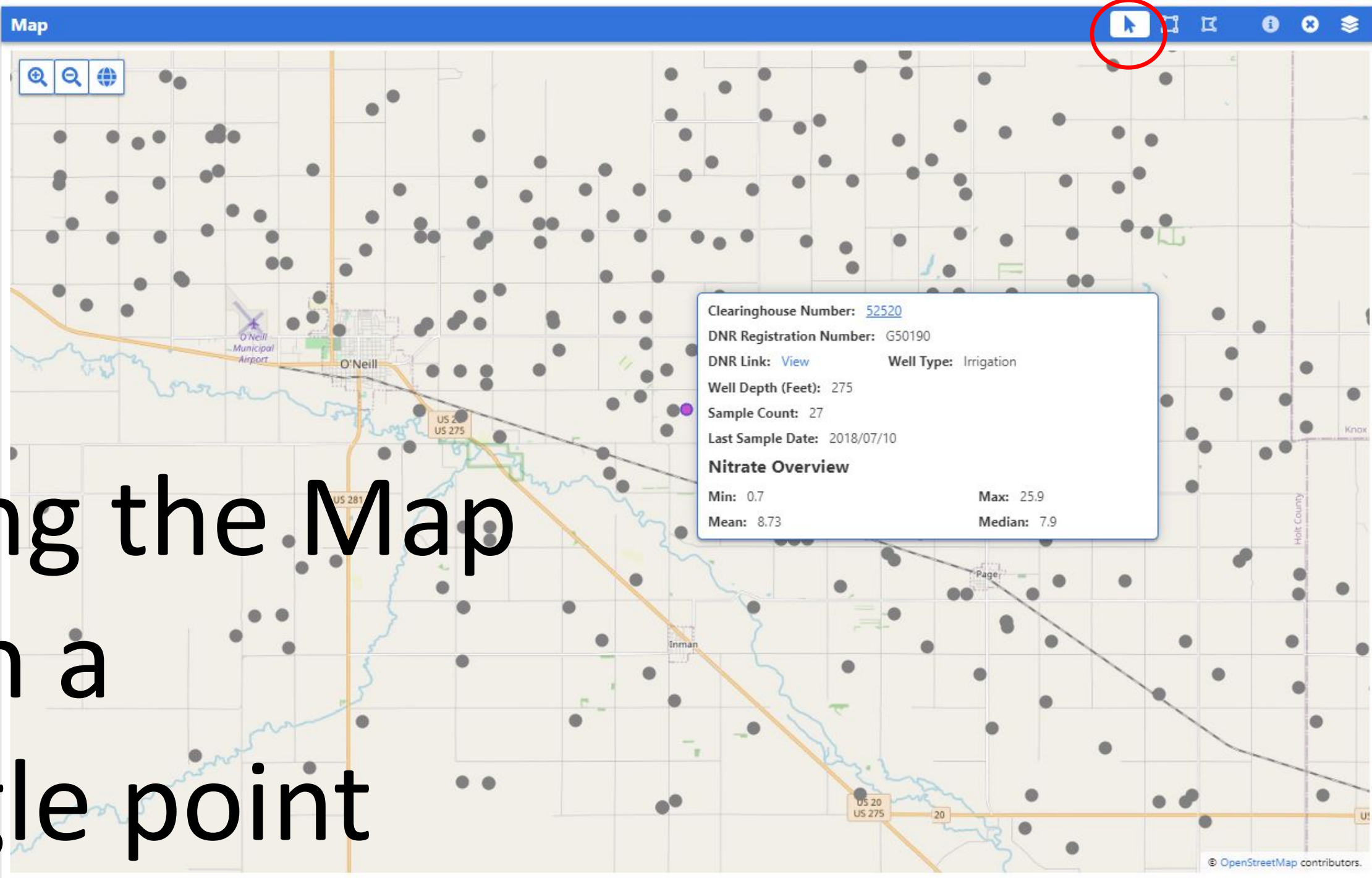
Download Database

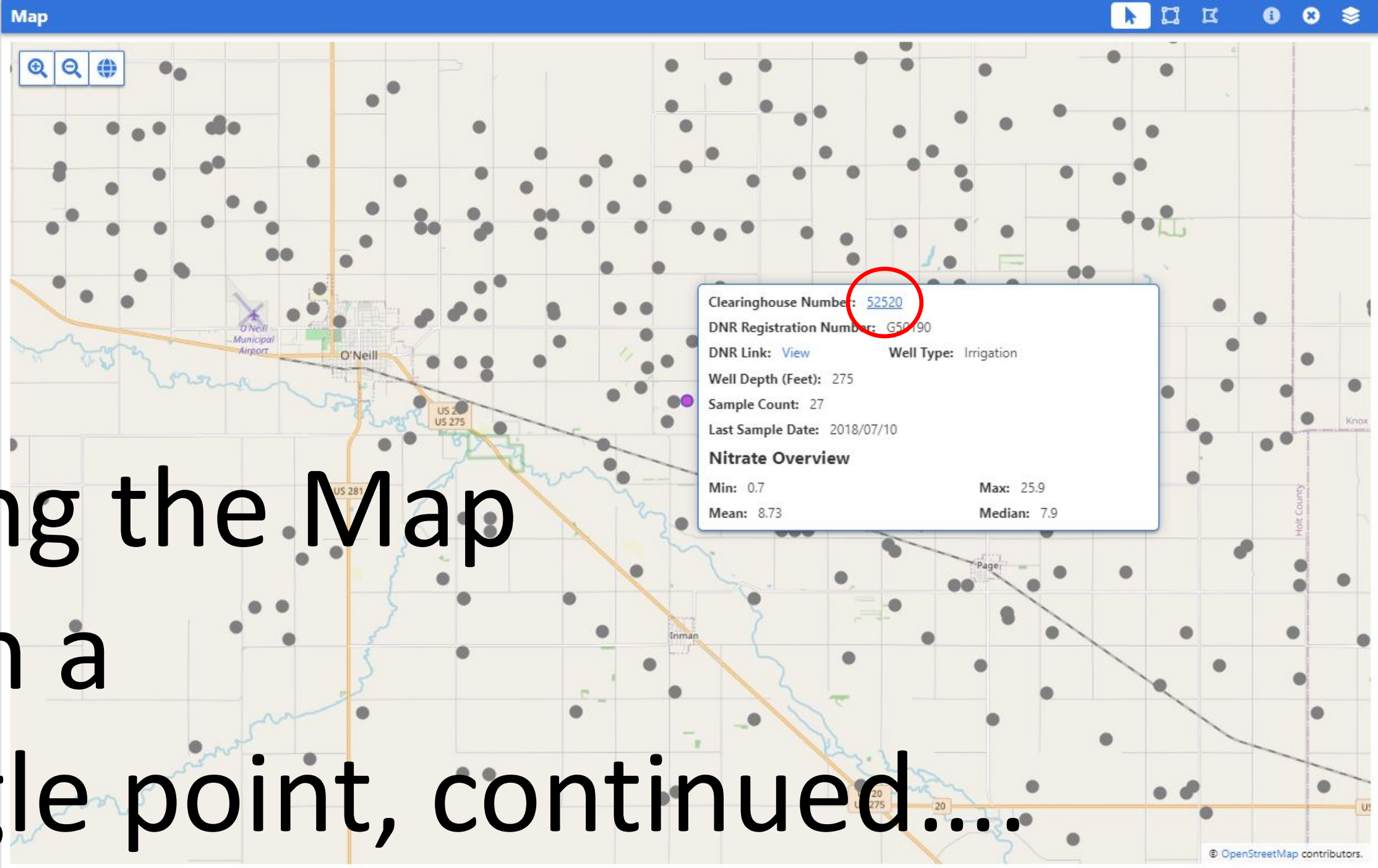


Mitchell

Sioux Falls

Using the Map  
with a  
single point

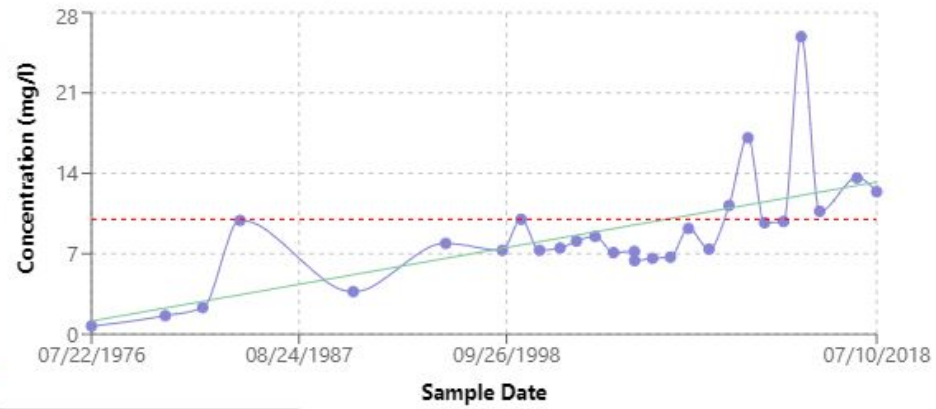




Using the Map  
with a  
single point, continued....



### Clearinghouse # 52520 - Nitrate Levels



Well Details

Well Screens

Sample Results

#### Well

Clearinghouse Number: 52520  
 DNR Registration Number: G50190  
 DNR Well ID: 57692  
 Well Type: Irrigation  
 Well Depth (Feet): 275  
 Completion Date: 1976/02/25  
 DNR Link: [View](#)

#### Location

County: Holt  
 NRD: Upper Elkhorn  
 Township|Range|Section: 29N|10W|31  
 Latitude (NAD83): 42.4452352676  
 Longitude (NAD83): -98.5276872218

#### Aquifer

Local Aquifer:  
 National Aquifer:

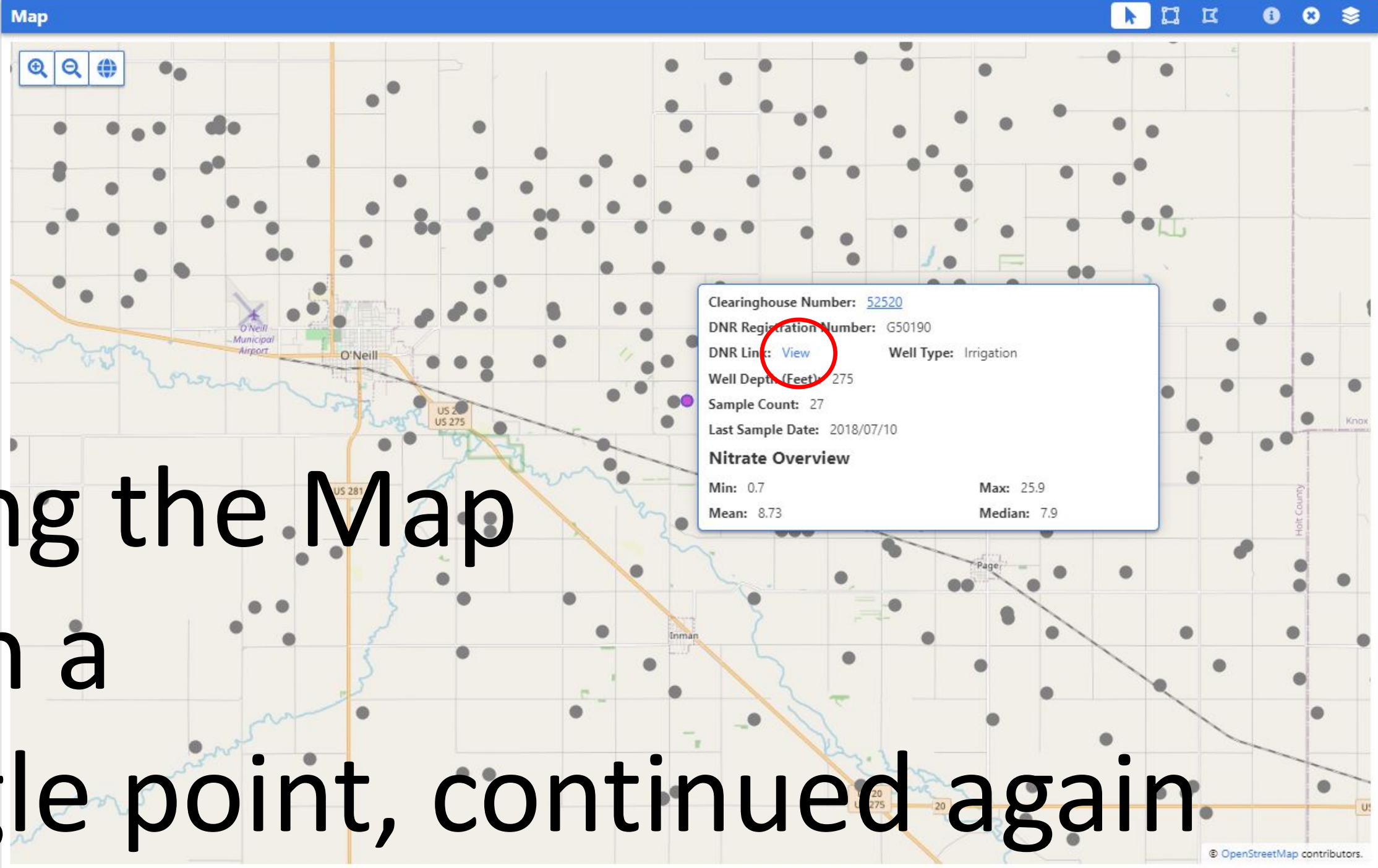
**Sample Count:** 27

**Last Sample Date:** 2018/07/10

**Most Recent Pesticide Sample Date:** None

#### Nitrate Overview

**Min:** 0.7                      **Max:** 25.9  
**Mean:** 8.7                      **Median:** 7.9



Using the Map  
with a  
single point, continued again

[Return to Search Page](#)
**Nebraska Department of Natural Resources**

Database Through: 9/24/2020

Processed: 9/24/2020 12:57:36 PM

## REGISTERED GROUNDWATER WELLS DATA RETRIEVAL

**Search Results Maximum 1000 Per Page**

Note:

Information on Public Water Supply Wells is not available through this interface. Contact the Department of Natural Resources (Data Bank) at 402-471-2363 for more information. All registration documentation for water wells registered after January 1, 1969, except Public Water Supply wells, are now available.

Due to possibility of a well being in more than one series, an individual well might be listed more than once.

1 Records Found

Registration# Well ID Permit Number	Use Status	County Name NRD Name Well Location Footage Latitude Longitude	Completion Date Filing Date Decommission Date Times Replaced Online Registration ID (NOLID)	Acres Irrigated Gallons/Minute Static Level Pumping Level Series	Pump Column Diameter Pump Depth Well Depth	Owner's Name Owner's ID Address
G-050190 WellID: 57692 <a href="#">View Details</a> <a href="#">View Logs</a> <a href="#">View Scans</a>	I A	Holt Upper Elkhorn 29N 10W 31 SWNE  <a href="#">Map It</a>	2/25/1976 6/16/1976 ---	134 700 gpm 37 ft 171 ft PRO	8 in --- 275 ft	Donald E & Laurie K Adamson OwnerID: 128334 801 Fairway Ave Oneill NE 68763

[Next](#)

# Using the Map

with multiple points

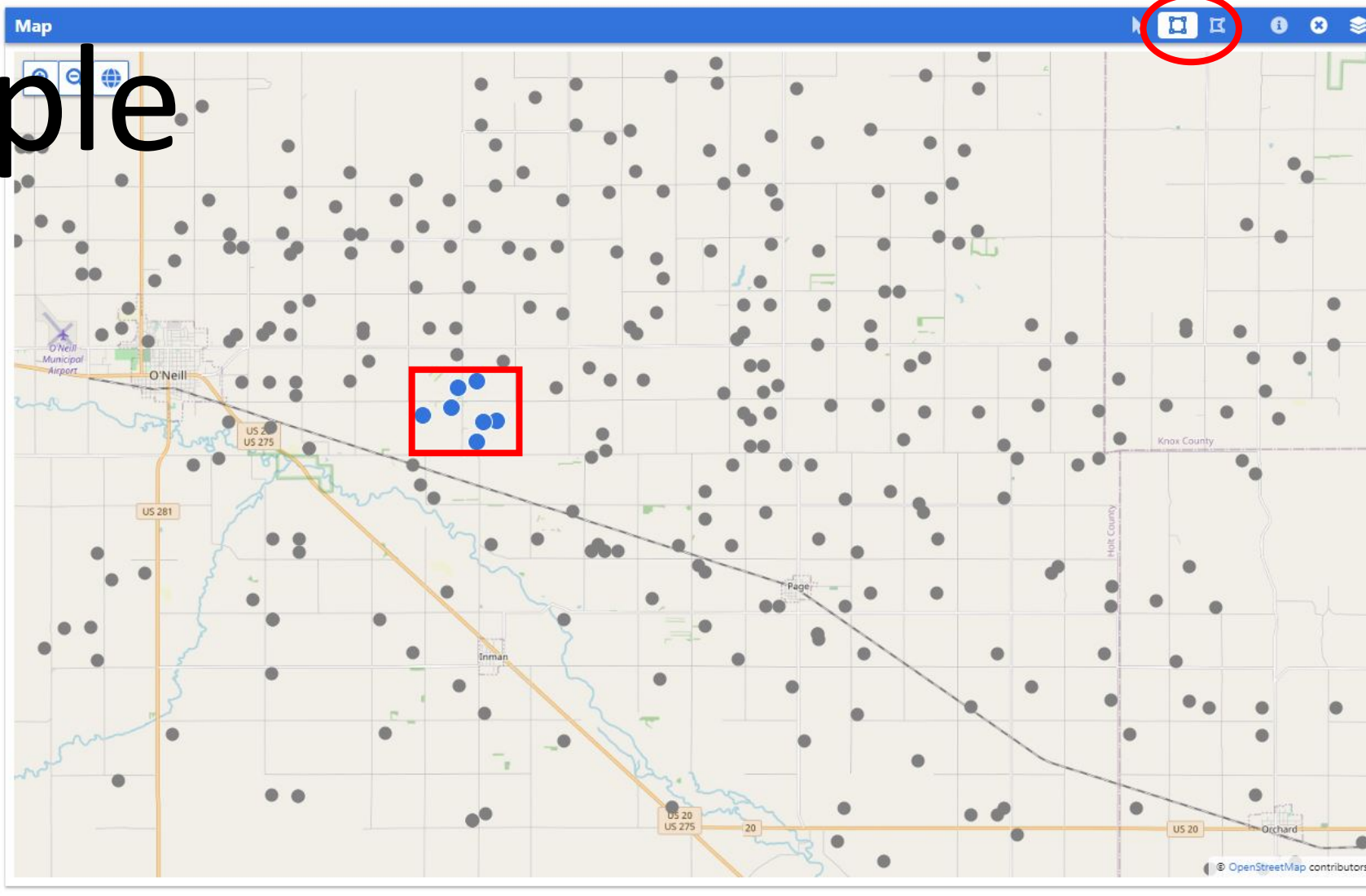
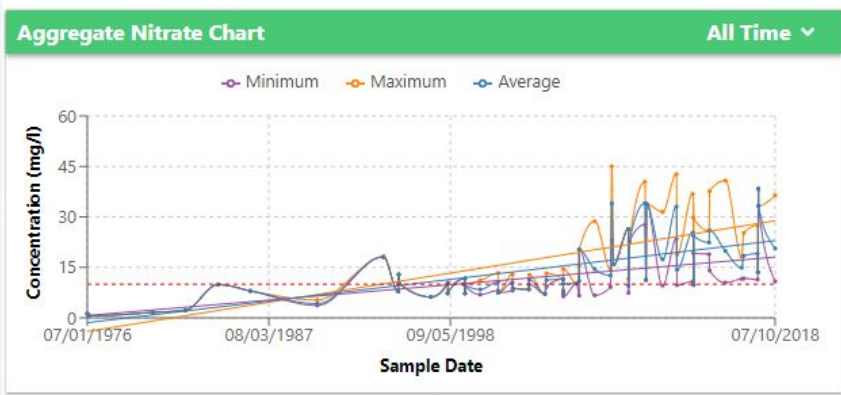
**Sample Result Explorer**

Applied Filters:

Clear	Number	Sample Date	Analyte/CAS #	Concentration
<a href="#">522103</a>		2019/10/29	tetrachloroethene (CAS #: 127-18-4)	0.6
<a href="#">522103</a>		2019/10/29	naphthalene (CAS #: 91-20-3)	0
<a href="#">522103</a>		2019/10/29	1,2-dichloroethane (CAS #: 107-06-2)	0
<a href="#">522103</a>		2019/10/29	1,4-dichlorobenzene (CAS #: 106-46-7)	0
<a href="#">522103</a>		2019/10/29	1,3-dibromo-2-chloropropane (CAS #: 96-12-8)	0
<a href="#">522103</a>		2019/10/29	1,2-dichlorobenzene (CAS #: 120-82-1)	0
<a href="#">522103</a>		2019/10/29	bromobenzene (CAS #: 74-83-9)	0
<a href="#">522103</a>		2019/10/29	1,2-dibromoethane (ethylene dibromide) (CAS #: 106-93-4)	0
<a href="#">522103</a>		2019/10/29	trans-1,3-dichloropropene (CAS #: 10061-02-6)	0
<a href="#">522103</a>		2019/10/29	carbon tetrachloride (CAS #: 56-23-5)	0

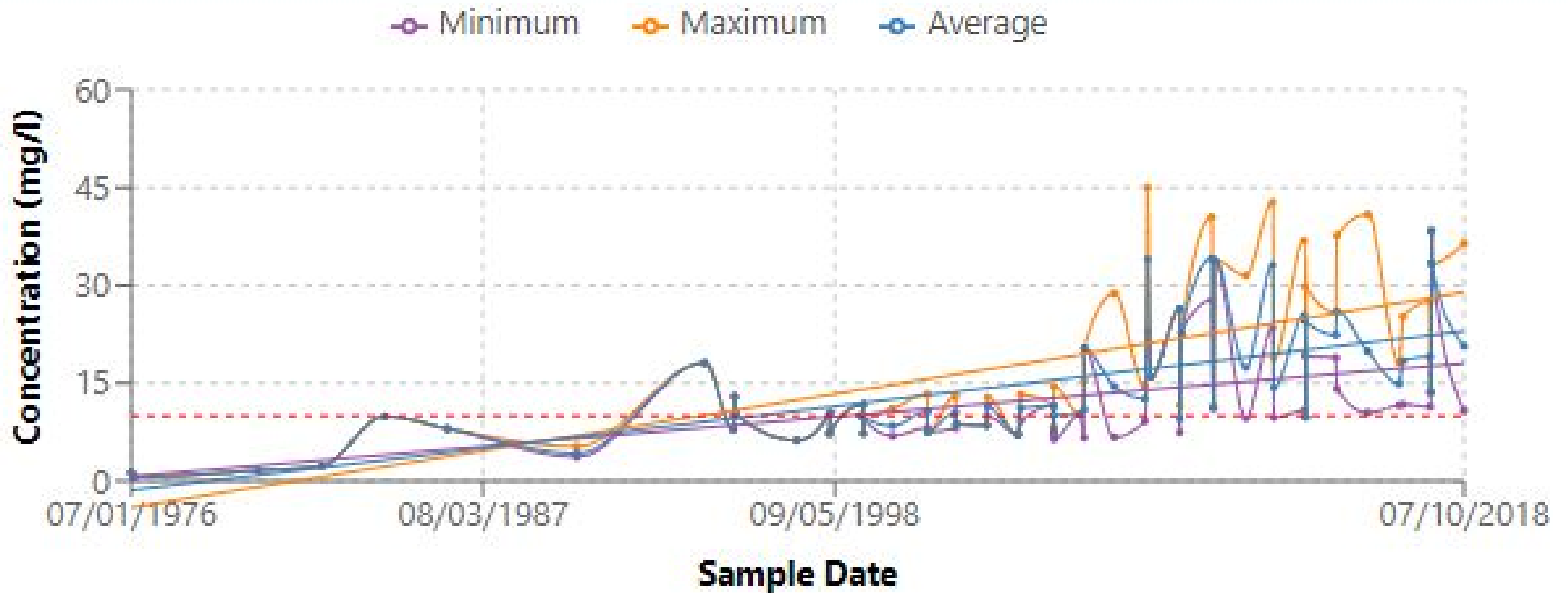
<< < > >> 936865 Total Results | Page 1 of 93687

| Go to page:  Show 10



# Aggregate Nitrate Chart

All Time ▾



# Multiple Points

This search will produce 30166 results.

### Well Detail

Clearinghouse Number:

DNR Registration Number:

DNR Well ID:

Well Type:

Included In NGWMN?

Sampling Count:

### Location

If entering Township, Range and Section, fill out one or more. Township defaults to North.

Township:

Range:

Range Dir:

Section:

County:

NRD:

### Lat/Long

If searching within this section, all three fields must be entered. Radius can remain zero if location is exact. Latitude must be between 40 and 43.0002 degrees and Longitude must be between -104 and -95.33 degrees.

Latitude (NAD83):

Longitude (NAD83):

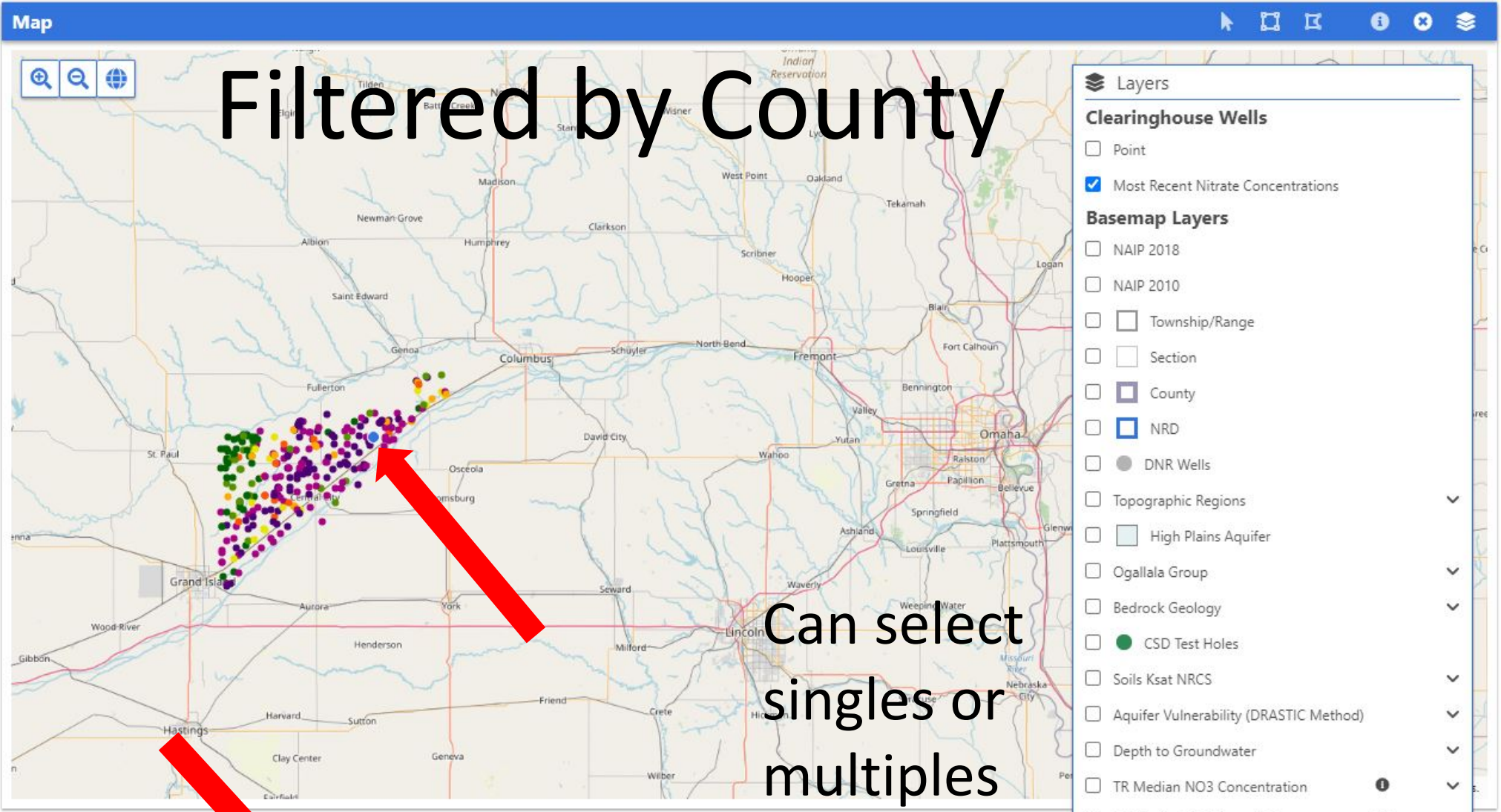
Radius (ft):

Apply Filter

Clear All Filters

Other search possibilities

Concentration	Units	% of
) 0.1	mg/L	1
) 0	mg/L	0
) 1.4	mg/L	14
) 1.3	mg/L	13
) 19.8	mg/L	198
) 2.7	mg/L	27
) 0	mg/L	0
) 1	mg/L	10
) 0.8	mg/L	8
) 0.2	mg/L	2
) 10	mg/L	100
) 11.3	mg/L	113
) 23.1	mg/L	231
) 60.4	mg/L	604
) 31	mg/L	310
) 23.1	mg/L	231
) 14.1	mg/L	141
) 28.4	mg/L	284
) 21.2	mg/L	212
) 1.1	mg/L	11
) 1.1	mg/L	11
) 0	mg/L	0

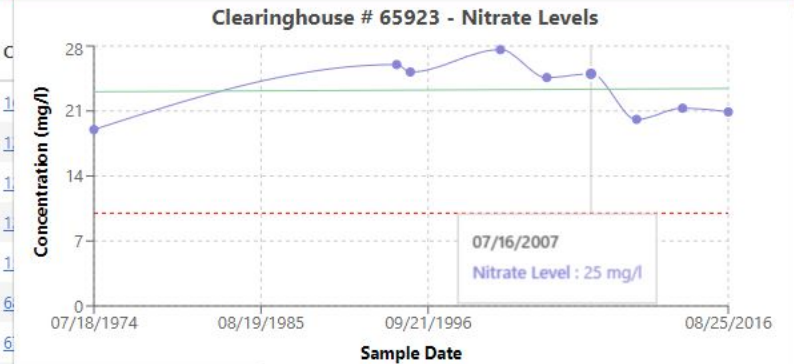


Filtered by County

Can select singles or multiples

Well Explorer								
<a href="#">65738</a>	G7154	11452	Irrigation	Merrick	Central Platte	13N 6W 19	41.08789	-98.05595
<a href="#">65835</a>	G8470	12990	Irrigation	Merrick	Central Platte	14N 7W 36	41.13876	-98.07543
<a href="#">65873</a>	G8672	13233	Irrigation	Merrick	Central Platte	13N 6W 2	41.1203955347	-97.9658526386
<a href="#">65923</a>	G9520	14231	Irrigation	Merrick	Central Platte	15N 4W 19	41.2511393479	-97.8266755919
<a href="#">65926</a>	G9515	14226	Irrigation	Merrick	Central Platte	13N 8W 13	41.09153	-98.17549

**S Details** All Time ⌵ ✕



Well Details | Well Screens | Sample Results

**Well**

Clearinghouse Number: 65923  
 DNR Registration Number: G9520  
 DNR Well ID: 14231  
 Well Type: Irrigation  
 Well Depth (Feet): 75  
 Completion Date: 1957/08/09  
 DNR Link: [View](#)

**Location**

County: Merrick  
 NRD: Central Platte  
 Township|Range|Section: 15N|4W|19  
 Latitude (NAD83): 41.2511393479  
 Longitude (NAD83): -97.8266755919

**Aquifer**

Local Aquifer:  
 National Aquifer:

**Sample Count:** 9

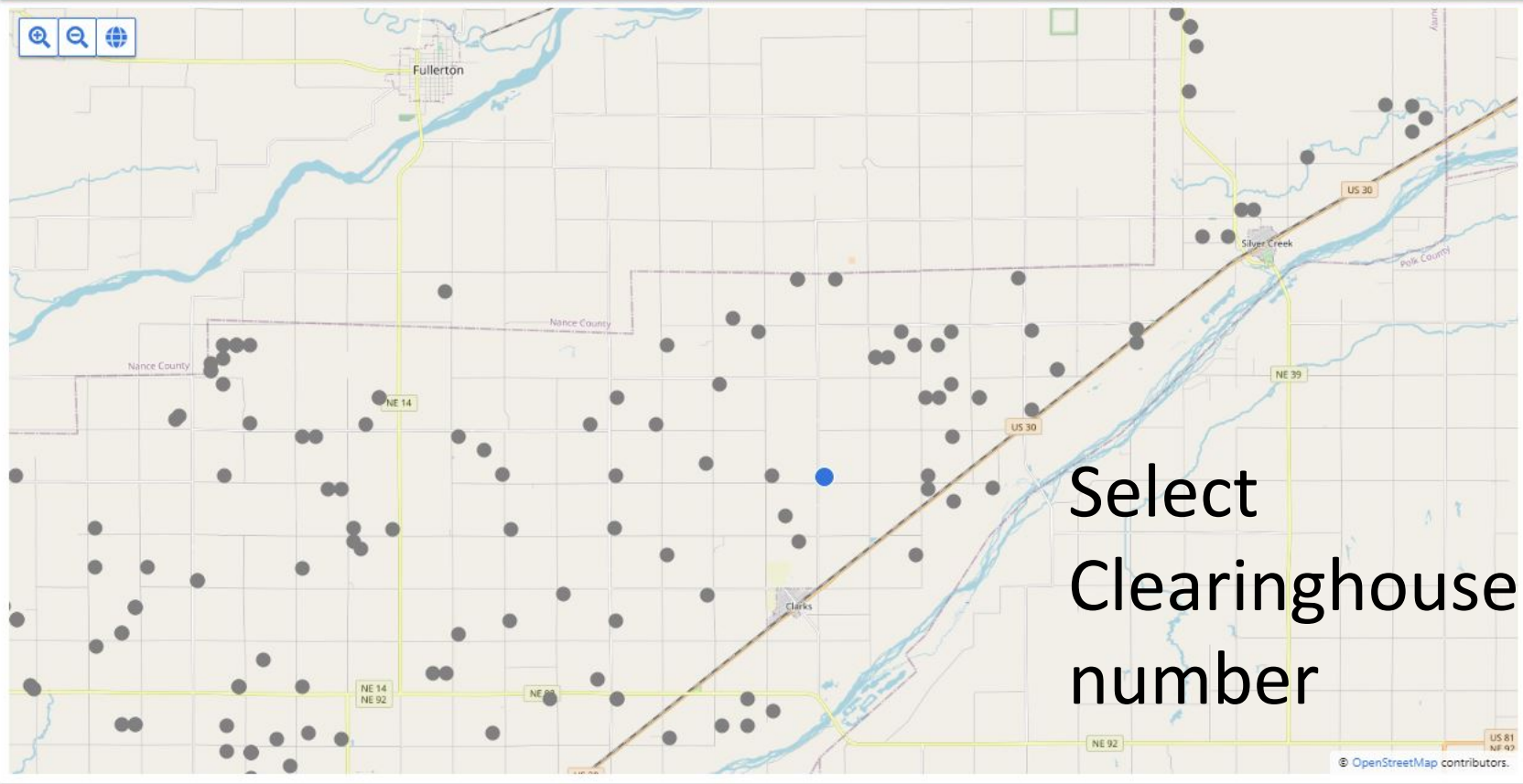
**Last Sample Date:** 2016/08/25

**Most Recent Pesticide Sample Date:** None

**Nitrate Overview**

Min: 19                      Max: 27.6  
 Mean: 23.3                  Median: 24.6

**Map** 🔍 🌐 📏 📍 🗨️ 🗳️



Select  
Clearinghouse  
number

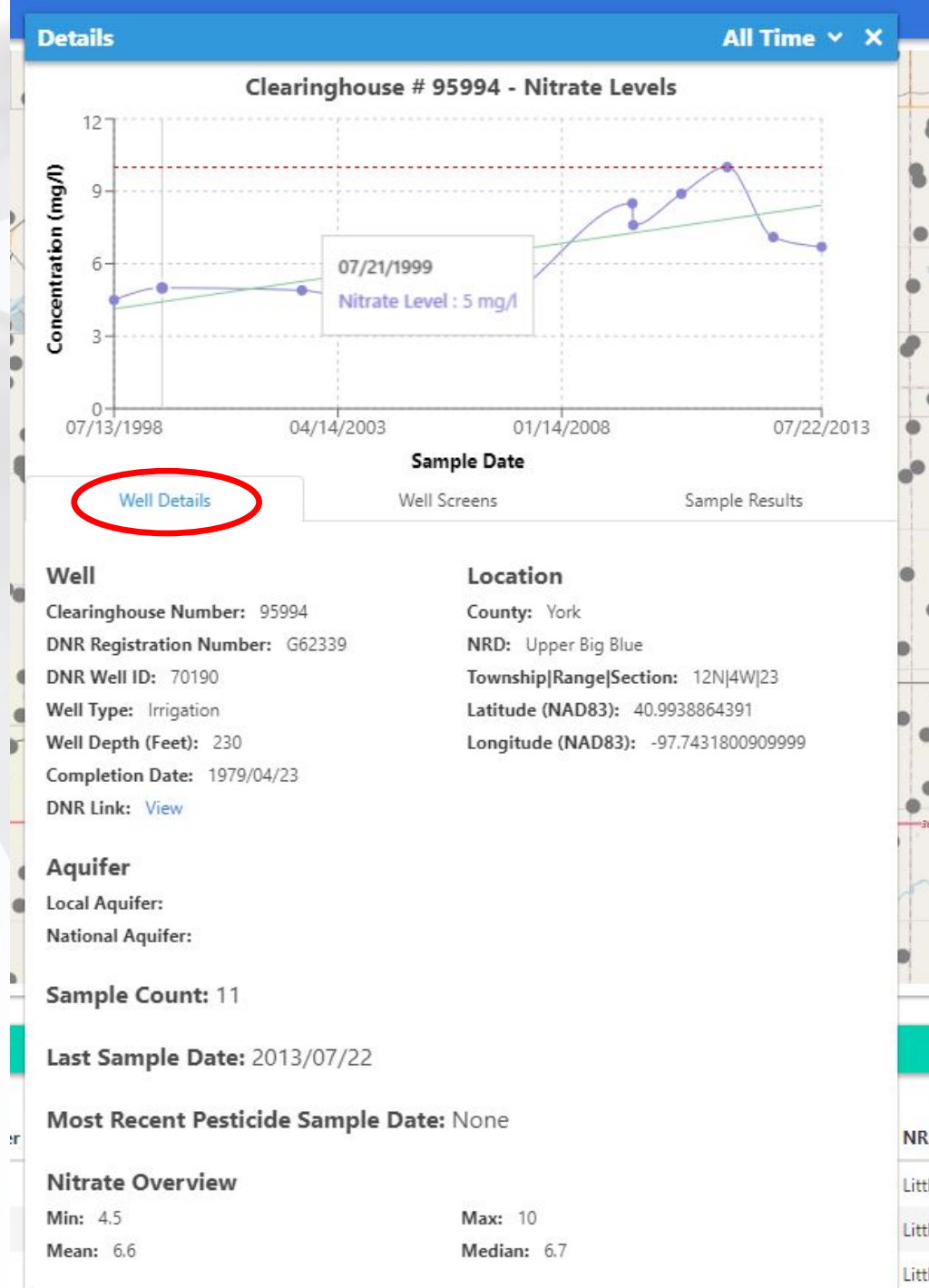
**Well Explorer**

<a href="#">65738</a>	G7154 X	11452	Irrigation	Merrick	Central Platte	13N 6W 19	41.08789	-98.05595
<a href="#">65835</a>	G8470	12990	Irrigation	Merrick	Central Platte	14N 7W 36	41.13876	-98.07543
<a href="#">65873</a>	G8672	13233	Irrigation	Merrick	Central Platte	13N 6W 2	41.1203955347	-97.9658526386
<b>65923</b>	<b>G9520</b>	<b>14231</b>	<b>Irrigation</b>	<b>Merrick</b>	<b>Central Platte</b>	<b>15N 4W 19</b>	<b>41.2511393479</b>	<b>-97.8266755919</b>
<a href="#">65926</a>	G9515	14226	Irrigation	Merrick	Central Platte	13N 8W 13	41.09153	-98.17549
<a href="#">65939</a>	G9670	14405	Irrigation	Merrick	Central Platte	13N 7W 4	41.1242489401	-98.1232252468

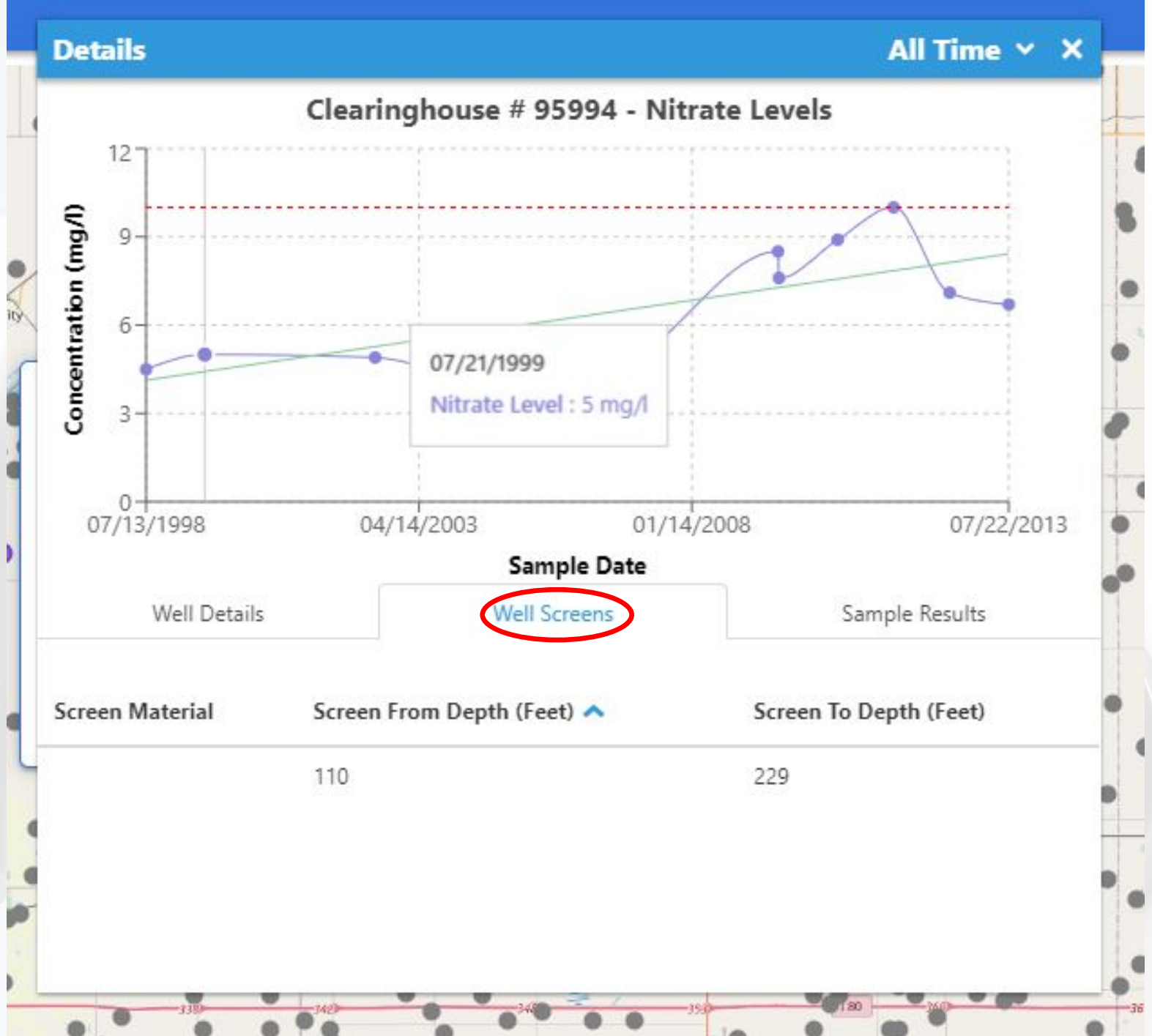




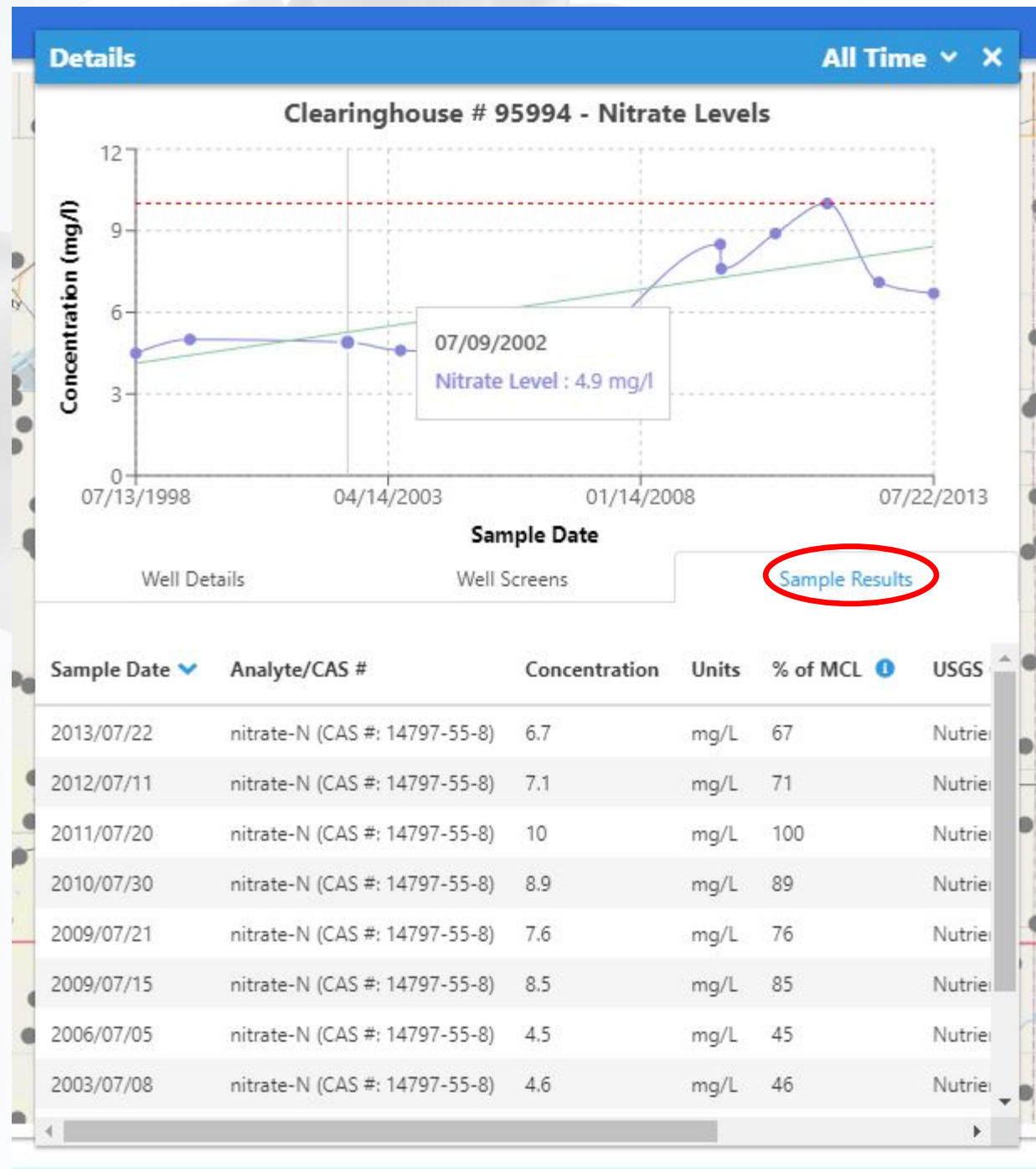
# Well Details



# Well Screens



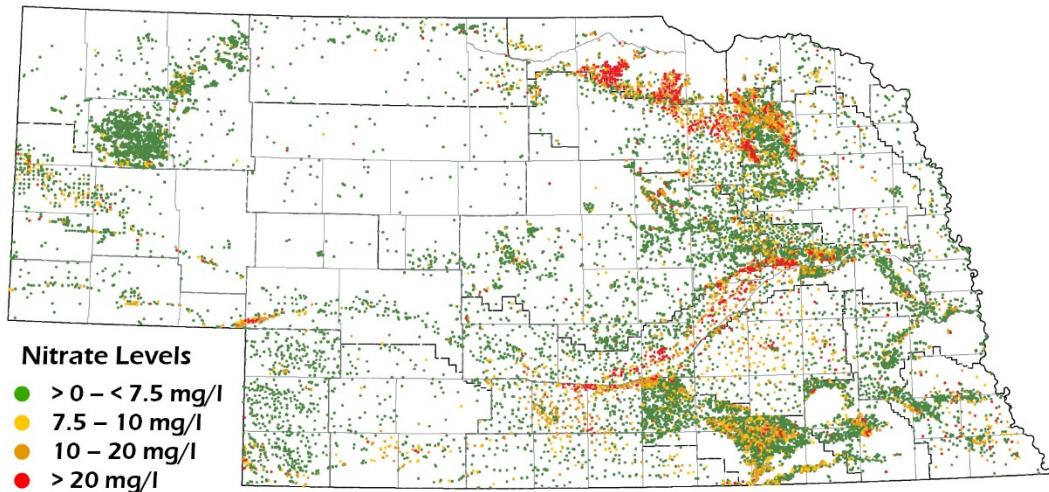
# Sample Results



# How will the NDEE use this?

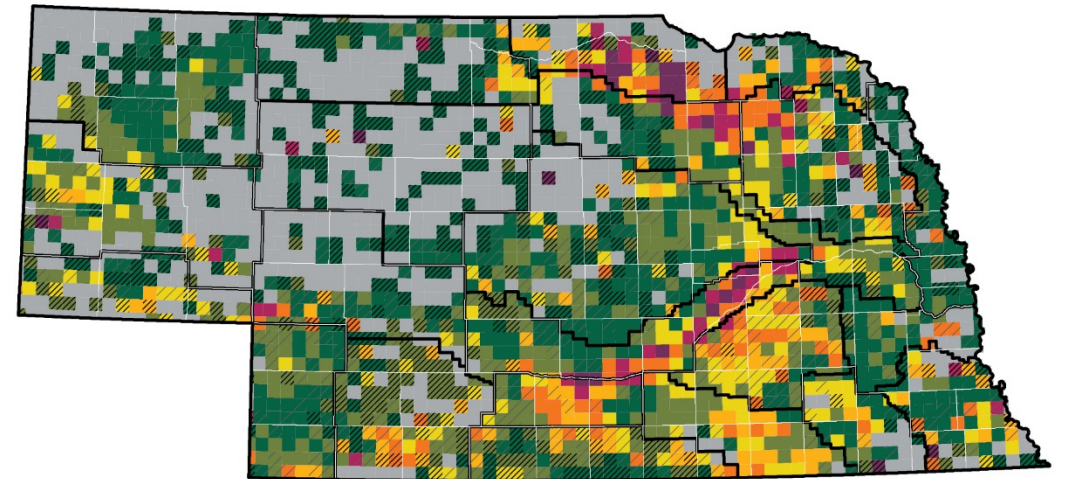
## Groundwater Quality – Annual Report

**MOST RECENT NITRATE-N CONCENTRATIONS**

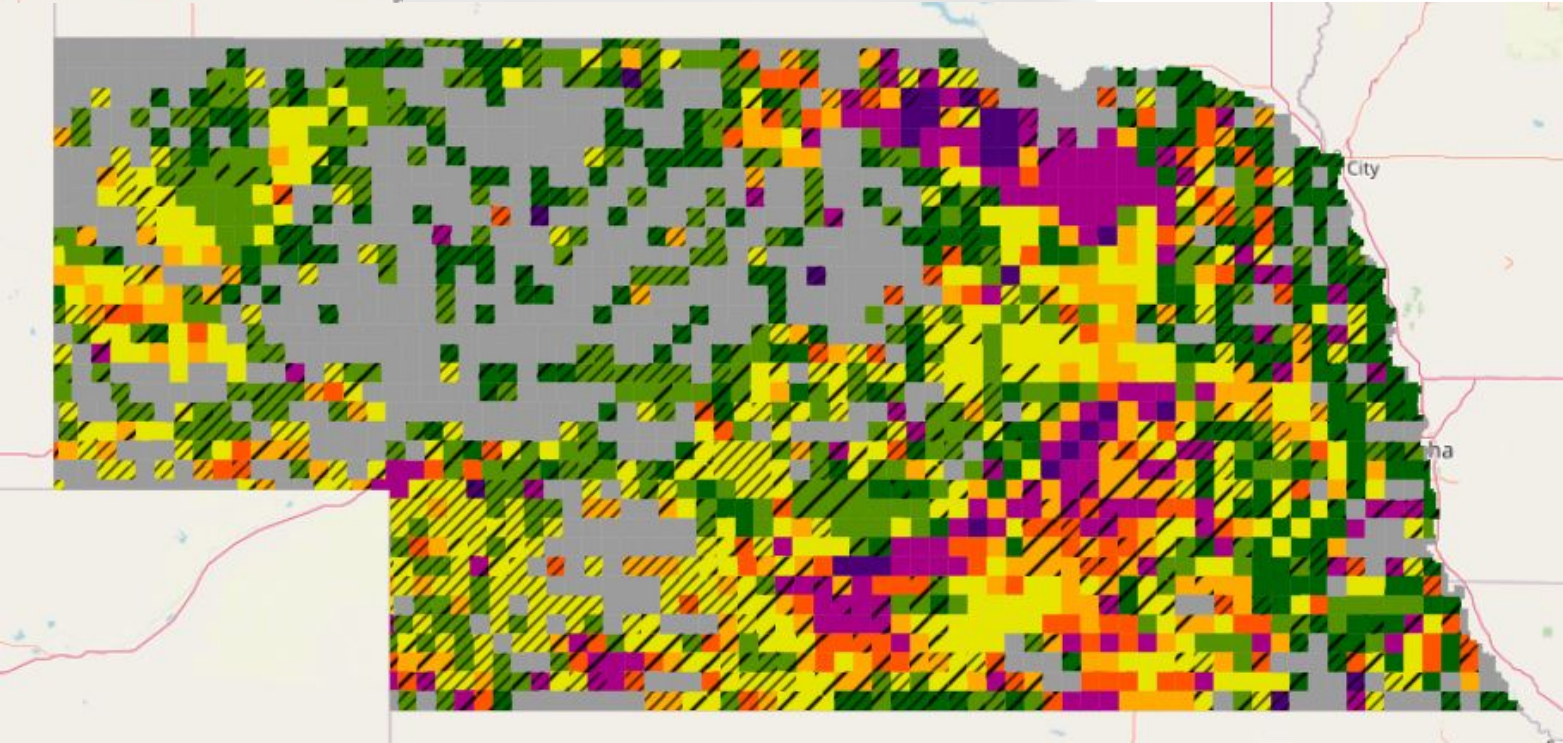
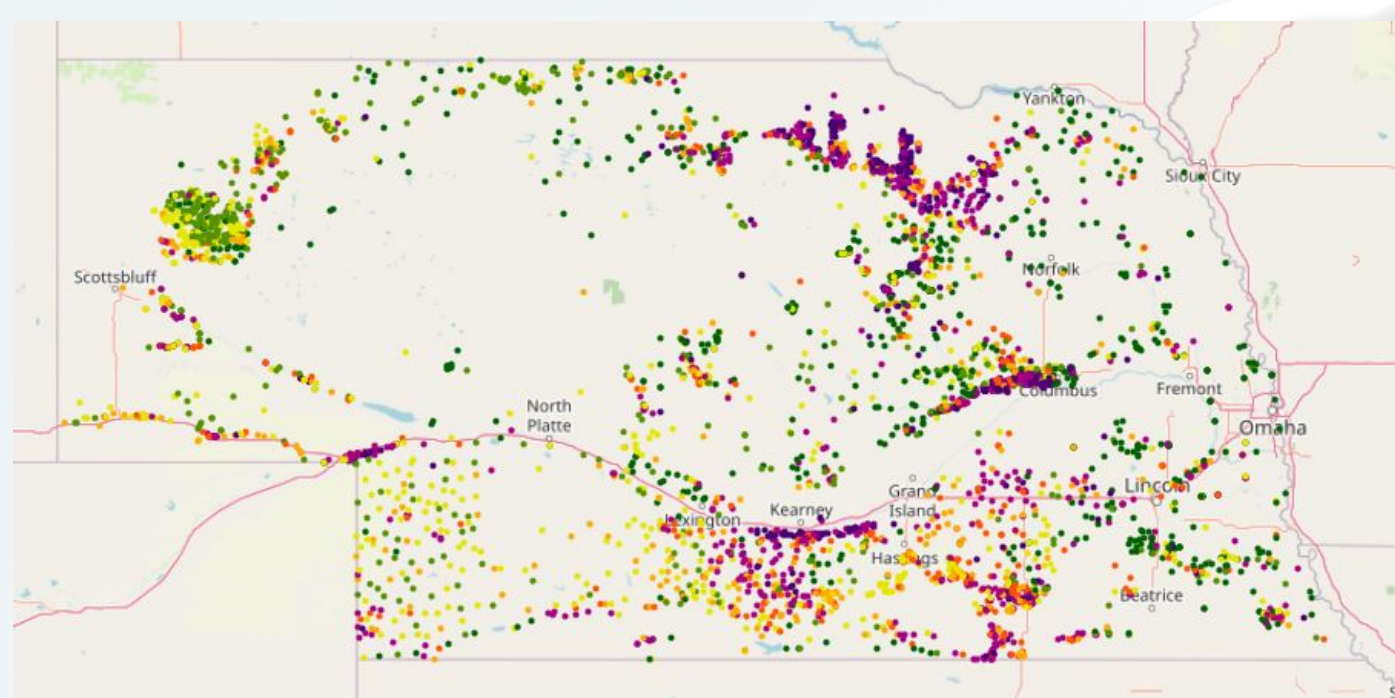


Most recent recorded Nitrate-N concentrations of 18,182 wells from 1998-2017.  
(Source: Quality-Assessed Agrichemical Database for Nebraska Groundwater, 2018)  
*Empty areas indicate no data reported, not the absence of nitrate in groundwater.*

**MOST RECENT NITRATE-N CONCENTRATIONS BY TOWNSHIP**



Median of the most recent Nitrate-N concentrations by township of 18,182 wells from 1998-2017.  
(Source: Quality-Assessed Agrichemical Database for Nebraska Groundwater, 2018)  
*Empty areas indicate no data reported, not the absence of nitrate in groundwater.*





Questions?

Becky Schuerman ©2017