

Environmental Justice at EPA Today

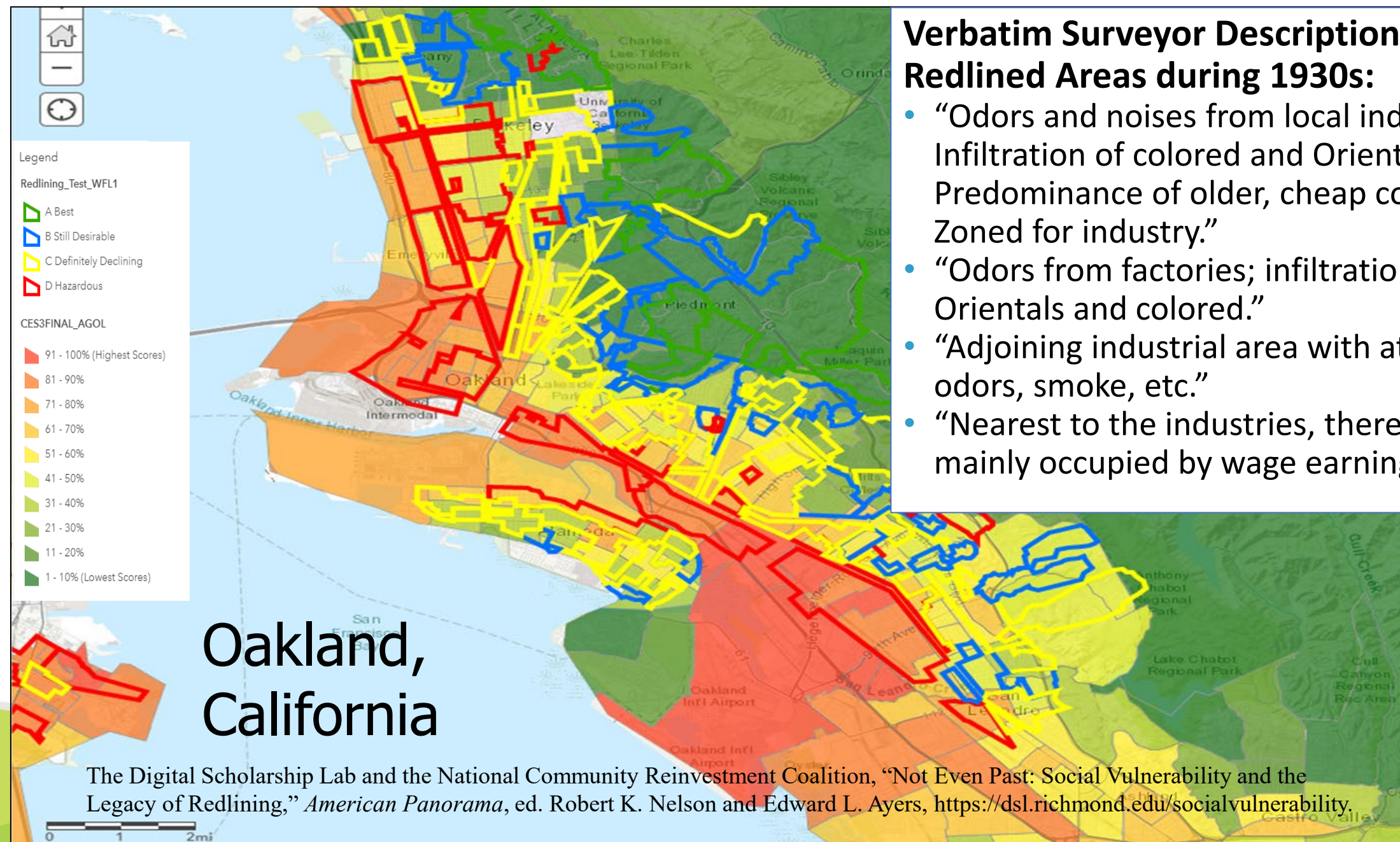
An overview of key EJ concepts and
examples of EJ-related activity at U.S. EPA

**Presented by Matthew Tejada, Deputy Assistant
Administrator for Environmental Justice**

September 2023

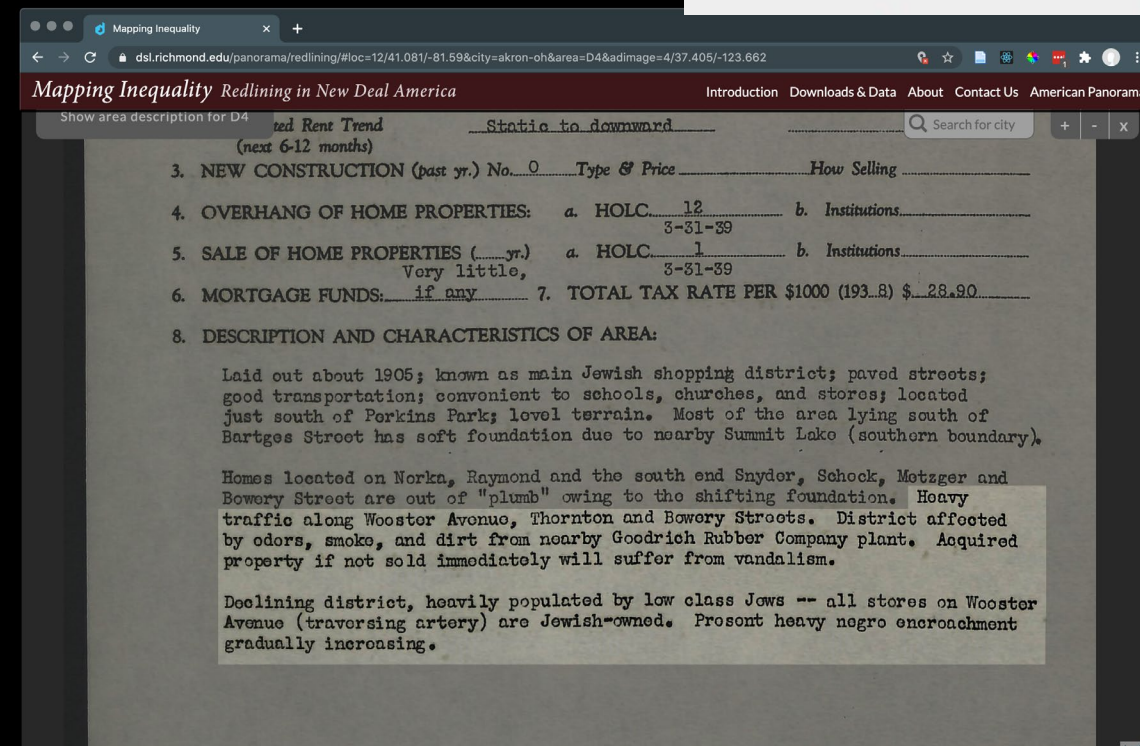
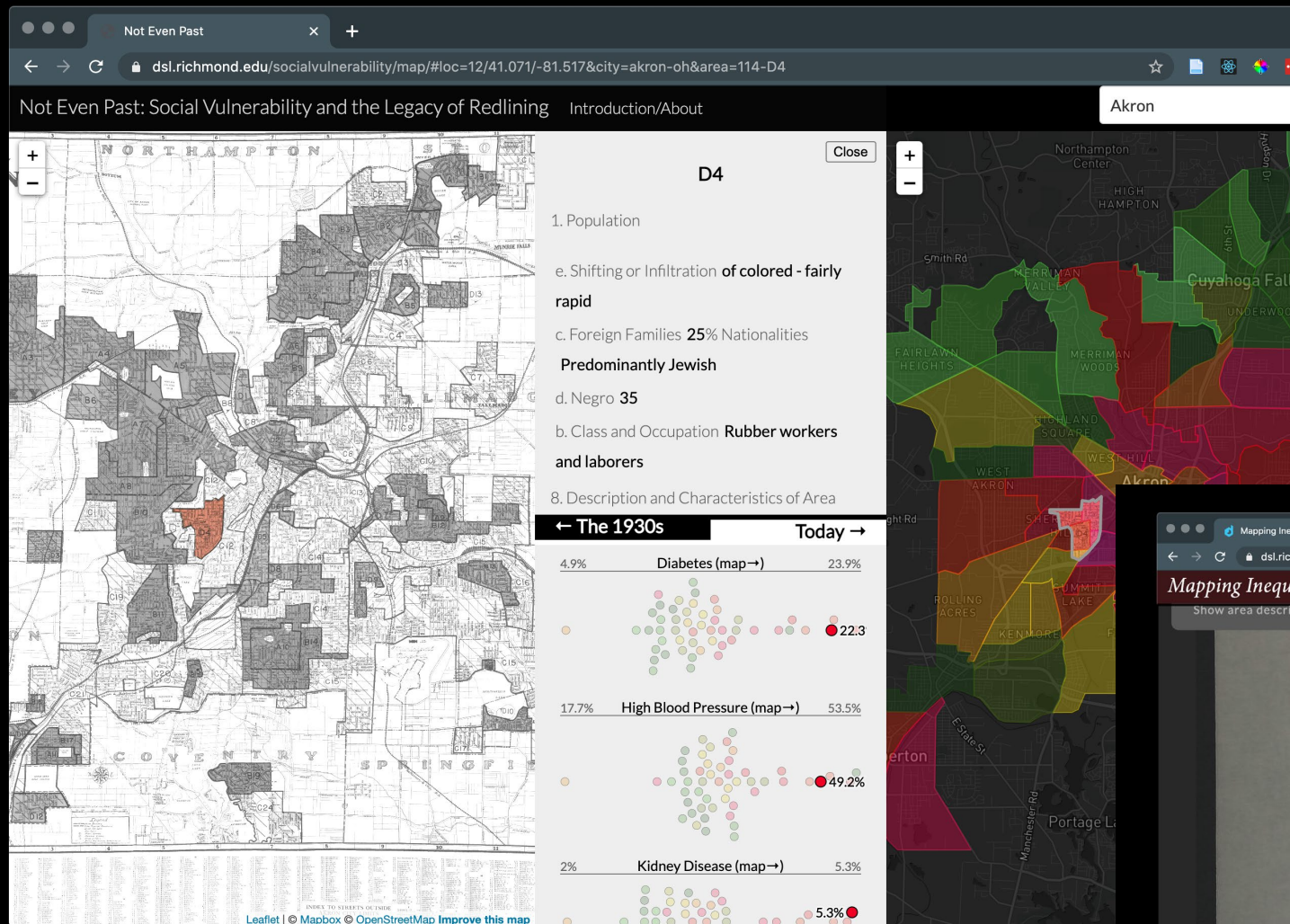
GWPC Forum – Tampa, Florida

Historical Legacy of EJ: Redlining and Systemic Racism



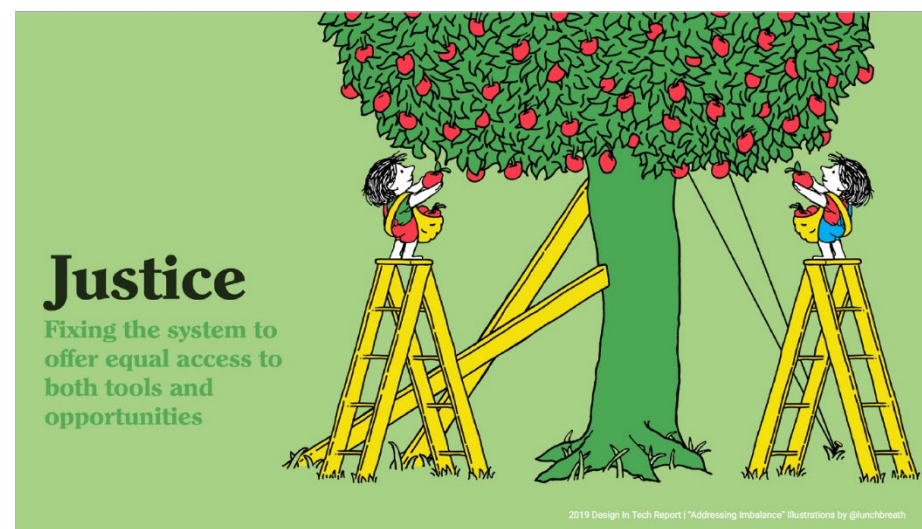
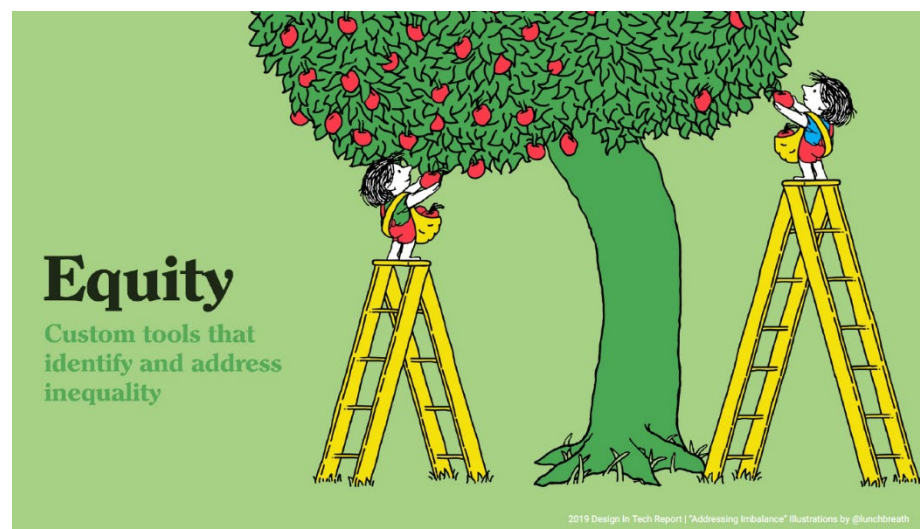
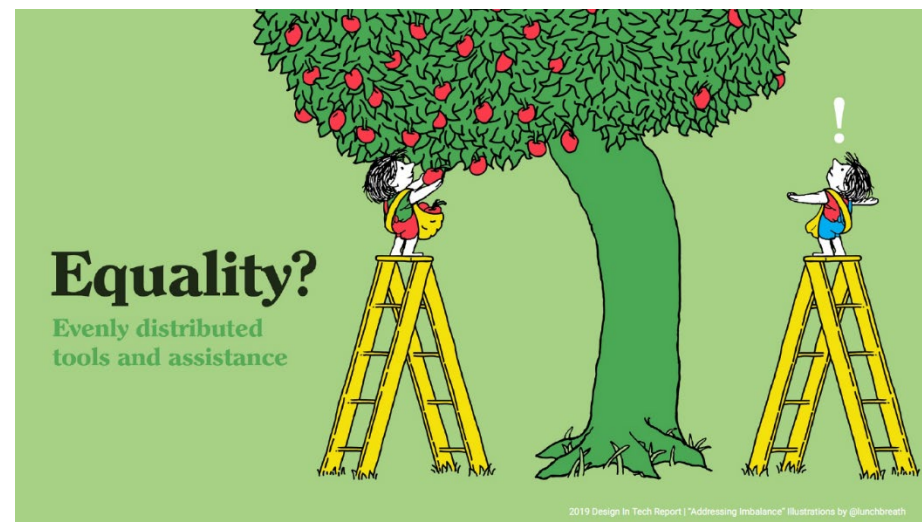
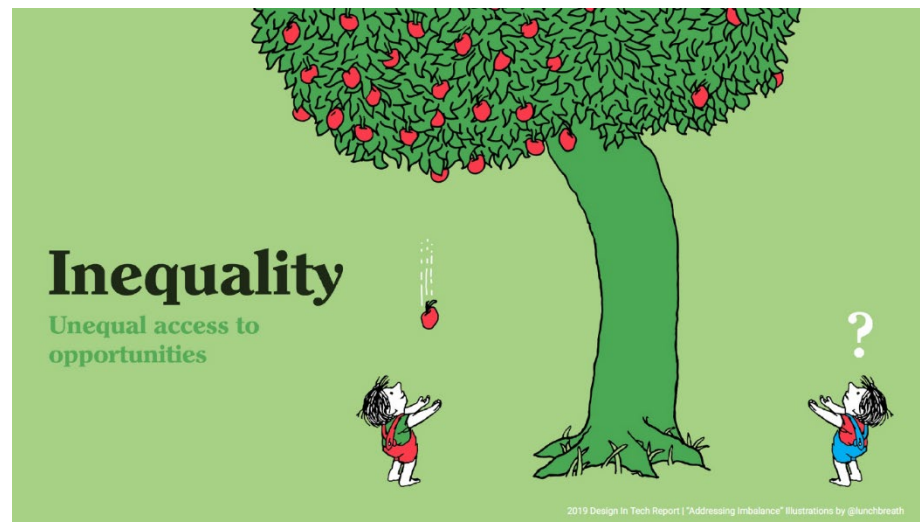
Verbatim Surveyor Descriptions of Redlined Areas during 1930s:

- "Odors and noises from local industries. Infiltration of colored and Orientals. Predominance of older, cheap cottages. Zoned for industry."
- "Odors from factories; infiltration of Orientals and colored."
- "Adjoining industrial area with attendant odors, smoke, etc."
- "Nearest to the industries, thereby being mainly occupied by wage earning families"



The Digital Scholarship Lab and the National Community Reinvestment Coalition, "Not Even Past: Social Vulnerability and the Legacy of Redlining," *American Panorama*, ed. Robert K. Nelson and Edward L. Ayers, <https://dsl.richmond.edu/socialvulnerability>.

Understanding EJ Equality, Equity & Justice



Source: https://designintech.report/wp-content/uploads/2019/03/dit2019_v00.pdf

Understanding EJ

Environmental Justice

“Environmental justice” means the just treatment and meaningful involvement of all people, regardless of income, race, color, national origin, Tribal affiliation, or disability, in agency decision-making and other Federal activities that affect human health and the environment so that people:

- (i) are fully protected from disproportionate and adverse human health and environmental effects (including risks) and hazards, including those related to climate change, the cumulative impacts of environmental and other burdens, and the legacy of racism or other structural or systemic barriers; and
- (i) have equitable access to a healthy, sustainable, and resilient environment in which to live, play, work, learn, grow, worship, and engage in cultural and subsistence practices.

Executive Order 14096, April 21, 2023

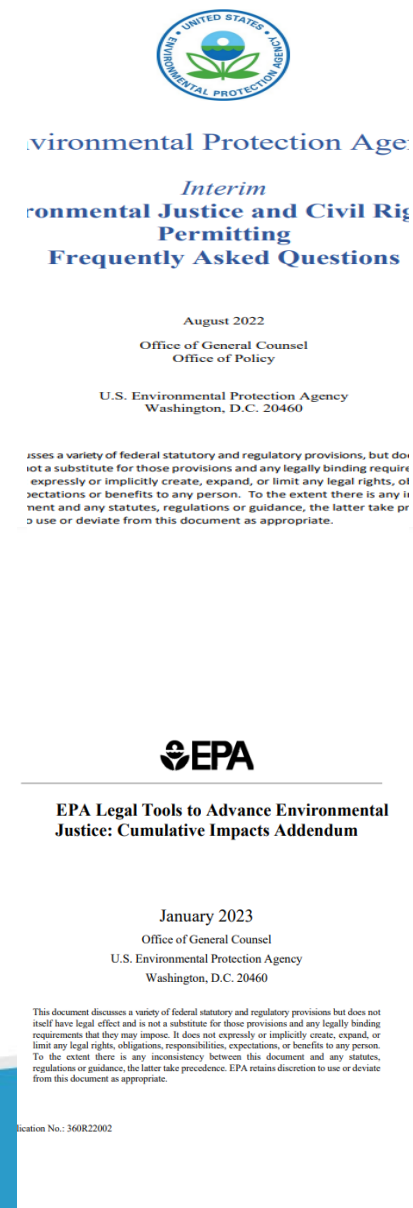
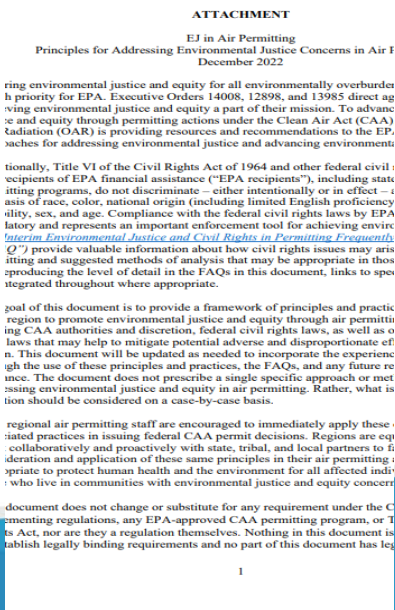
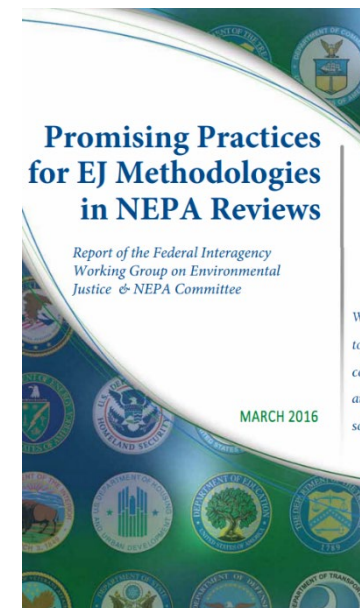


“Every person in the United States has the right to clean air, clean water, and a healthier life no matter how much money they have in their pockets, the color of their skin, or their zip code.”

Michael S. Regan
EPA Administrator

EPA EJ Priorities for 2023

1. Standing up a new program
2. Fulfilling commitments on
 - Cumulative Impacts
 - Outcome Measures
 - Civil Rights Compliance Guidance
3. Spending \$3+ BILLION Dollars to support communities and address disproportionate environmental and public health harms related to pollution and climate change







EJSCREEN Key Features

EPA EJSCREEN EPA's Environmental Justice Screening and Mapping Tool (Version 2.2)

[EJScreen Website](#) | [Mobile](#) | [Glossary](#) | [Help](#)

Please note: Territory data (except Puerto Rico) is not available as comparable to the US. It is only comparable to the territory itself by using the 'Compare to State' functionality. Likewise, some of the indicators may not be available for territories.

☒ Compare to US ☐ Compare to State

Environmental Justice Indexes

Supplemental Indexes

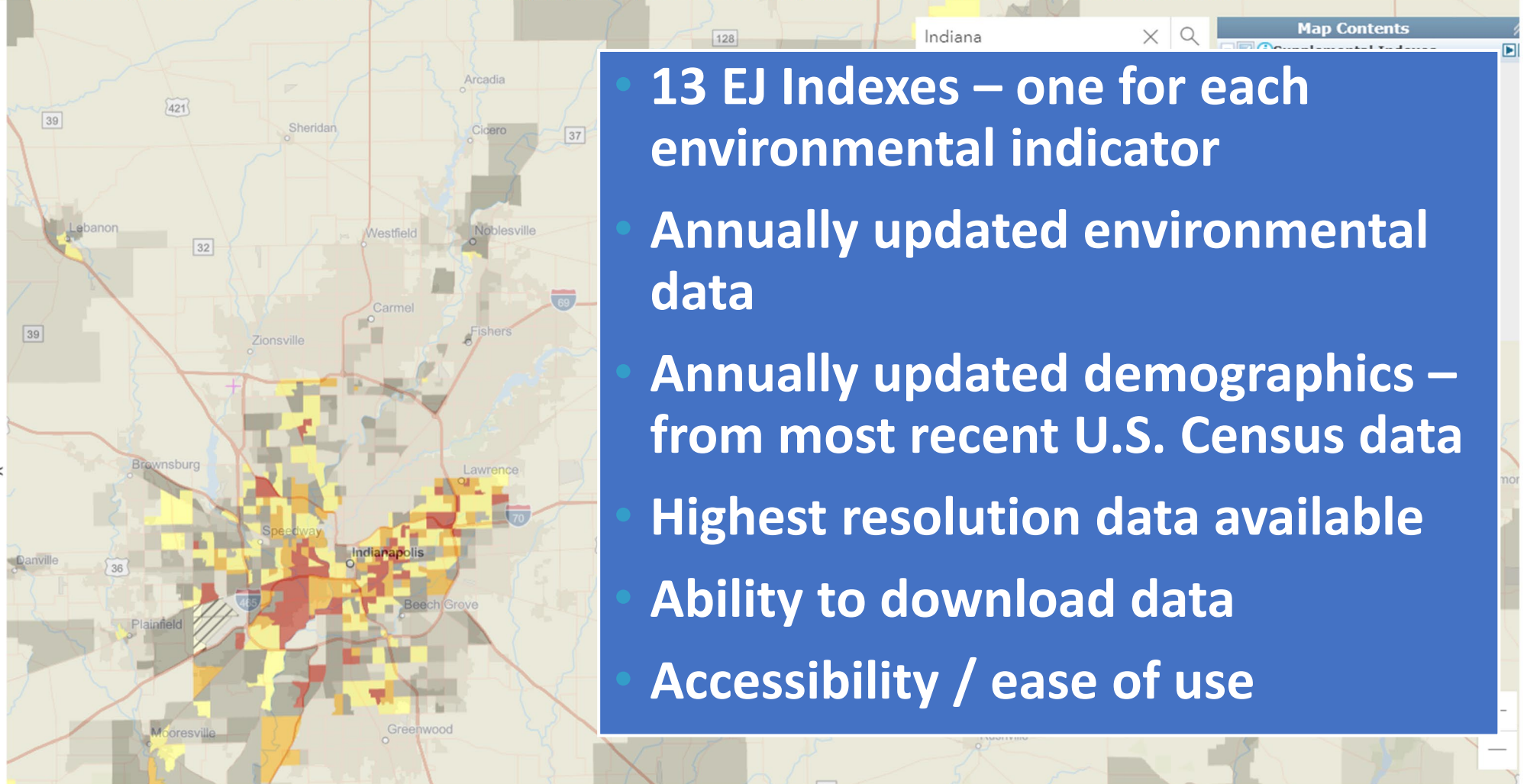
- Particulate Matter 2.5
- Ozone
- Diesel Particulate Matter
- Air Toxics Cancer Risk
- Air Toxics Respiratory HI
- Toxic Releases to Air
- Traffic Proximity
- Lead Paint
- Superfund Proximity
- RMP Facility Proximity
- Hazardous Waste Proximity
- Underground Storage Tanks
- Wastewater Discharge**

Pollution and Sources

Socioeconomic Indicators

Health Disparities

Climate Change Data



EJ Guidance for UIC Class VI

- Identify communities – use tools, talk to communities, look far and wide (i.e., the impacted community might not be where you think it is)
- Enhance public involvement – go beyond a meeting, provide support so communities can fully engage in the process
- Perform an EJ assessment – look hard at impacts and the impacted, vulnerable populations, unique pathways, cumulative and historical burdens
- Transparency – with everything legally allowable
- Limit impacts – minimize, mitigate, plan for and be ready for all emergencies including thinking of the changing climate



Thanks!

Matthew Tejada
tejada.matthew@epa.gov