

# AL WaterSTAR: Meeting Groundwater and Management Needs at the Geological Survey of Alabama

Greg Guthrie, P.G.

Groundwater Assessment Program Director  
Geological Survey of Alabama

GWPC 2021 Annual Forum  
September 27-29, 2021



# Needs and Requirements for WaterSTAR

- Be able to store large quantities of data in an accessible application
- Be able to store and provide groundwater water level and hydrochemical data to the public and stakeholders
- The application must have a geospatial interface
- The application must be searchable using a variety of criteria
- The application must be able to share information with the National Groundwater Monitoring Network
- The application must allow for data downloads dependent on security access level



# Home Page

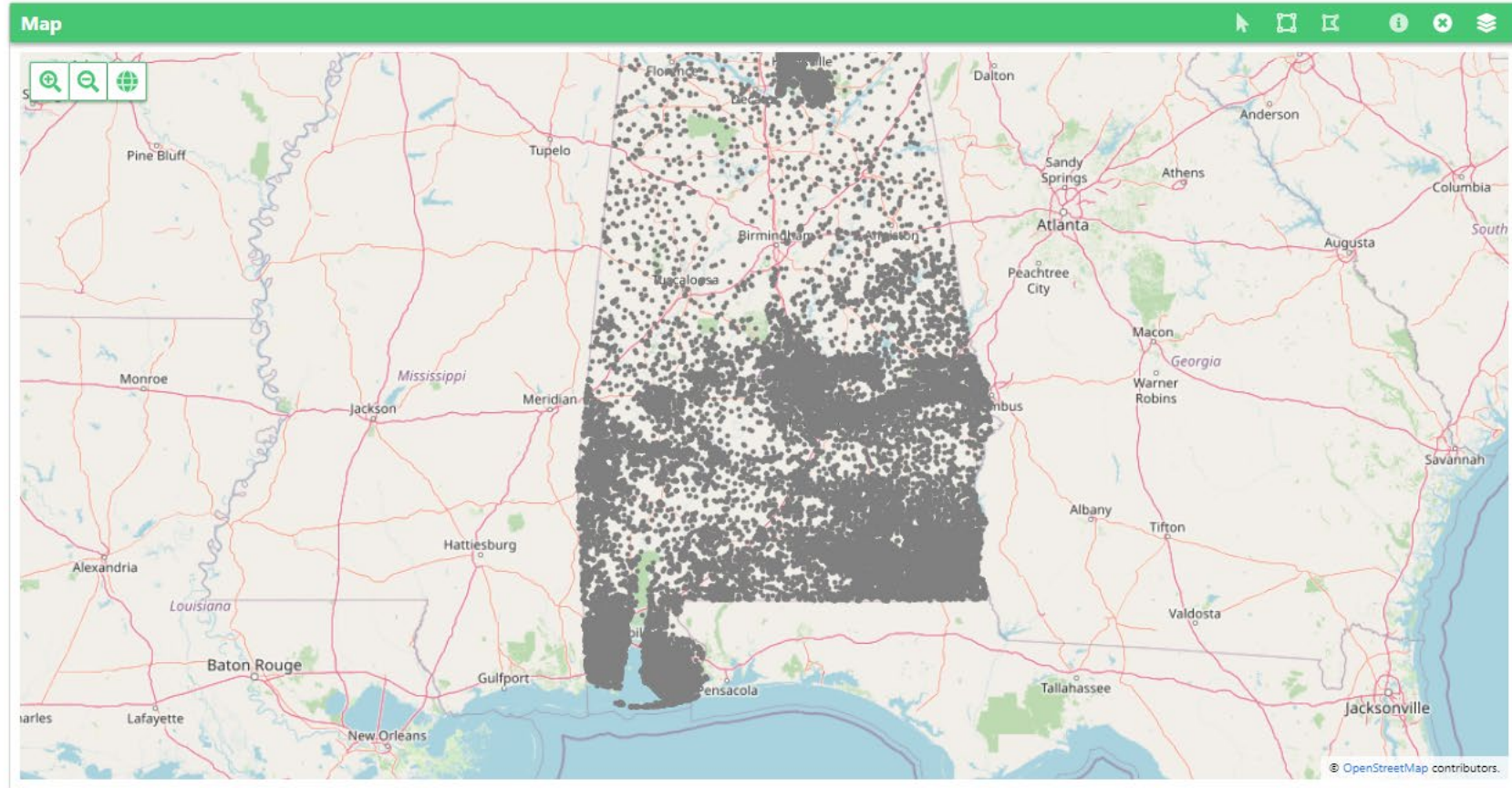
**Water Level Explorer** + ☰

Applied Filters:

GSA ID	Measurement Date	Depth to Water (ft/bls)	Water Level Elevation	Spring Fl
<a href="#">125Y33001</a>	2019/11/19			606
<a href="#">007L02002</a>	2019/11/19			1091
<a href="#">007C34001</a>	2019/11/19			182
<a href="#">129B37001</a>	2019/11/14	32.01		
<a href="#">085Y12001</a>	2019/11/14	43.85		
<a href="#">085L17001</a>	2019/11/14	-1		
<a href="#">085J28001</a>	2019/11/14	82.15		
<a href="#">085B21001</a>	2019/11/14	-0.2		
<a href="#">023M18005</a>	2019/11/14	68.78		
<a href="#">001U05001</a>	2019/11/14	122.09		
<a href="#">001P29001</a>	2019/11/14	137.75		
<a href="#">001N23001</a>	2019/11/14	10.27		
<a href="#">001I34001</a>	2019/11/14	56.67		
<a href="#">021X20003</a>	2019/11/13	64.2		
<a href="#">021R36001</a>	2019/11/13	20.29		
<a href="#">021H26001</a>	2019/11/13	39.17		
<a href="#">001O13001</a>	2019/11/13	96.48		
<a href="#">001O08001</a>	2019/11/13	45.4		
<a href="#">001I33001</a>	2019/11/13	62.02		
<a href="#">001G03006</a>	2019/11/13	206.9		
<a href="#">001E10006</a>	2019/11/13	111.4		

⏪ ⏩ 265502 Total Results | Page 1 of 5311

| Go to page:  Show 50 ▾



**Site Explorer** + ☰

Applied Filters:

GSA ID	Site Type	County	Section Township Range	Latitude (NAD83)	Longitude (NAD83)
<a href="#">001A05001</a>	Domestic	Autauga	5 20N 16E	32.74367935384373	-86.48130507417531
<a href="#">001A16001</a>	Domestic	Autauga	16 20N 16E	32.71542904126744	-86.46264039712173
<a href="#">001A19001</a>	Domestic	Autauga	19 20N 16E	32.69595759729213	-86.48374880339459
<a href="#">001A19002</a>	Domestic	Autauga	19 20N 16E	32.70082749887446	-86.49634316193936

# Site Explorer – Filters

Site Explorer

This search will produce 35237 results.

### Site Location

Meridian: Select Multiple...   v	Township: = v ⓘ x	Township Dir: Select Multiple...   v
Range: = v ⓘ x	Range Dir: Select Multiple...   v	Section: = v x
County: Select Multiple...   v	Quadrangle: LIKE v x	

### Site Detail

GSA ID: LIKE v x	Alias: LIKE v x	Site Type: Select Multiple...   v
National Aquifer: Select Multiple...   v	Local Aquifer: Select Multiple...   v	Included in NGWMN: Select...   v
Agency: Select Multiple...   v	Well Depth (Feet): = v x	Sample Count: = v x
Water Level Measurement Count: = v x		

### Site Lat/Long

If searching within this section, all three fields ust be entered. Radius can remain zero if location is exact. Latitude must be between 30.17 and 35.10 degrees and Longitude must be between -88.45 and -84.82 degrees.

Latitude (NAD83): = v ⓘ x	Longitude (NAD83): = v ⓘ x	Radius (Feet): = v x
------------------------------	-------------------------------	-------------------------

### Project Detail

Project Name: LIKE v x	Project Number: LIKE v x	Project Type: Select Multiple...   v
---------------------------	-----------------------------	---

Apply Filter Clear All Filters



# Water Level Explorer – List & Filters

**Water Level Explorer**

Applied Filters:

GSA ID	Measurement Date	Depth to Water (ft/bls)	Water Level Elevation	Spring Fl
<a href="#">125Y33001</a>	2019/11/19			606
<a href="#">007L02002</a>	2019/11/19			1091
<a href="#">007C34001</a>	2019/11/19			182
<a href="#">129B37001</a>	2019/11/14	32.01		
<a href="#">085Y12001</a>	2019/11/14	43.85		
<a href="#">085L17001</a>	2019/11/14	-1		
<a href="#">085J28001</a>	2019/11/14	82.15		
<a href="#">085B21001</a>	2019/11/14	-0.2		
<a href="#">023M18005</a>	2019/11/14	68.78		
<a href="#">001U05001</a>	2019/11/14	122.09		
<a href="#">001P29001</a>	2019/11/14	137.75		
<a href="#">001N23001</a>	2019/11/14	10.27		
<a href="#">001I34001</a>	2019/11/14	56.67		
<a href="#">021X20003</a>	2019/11/13	64.2		
<a href="#">021R36001</a>	2019/11/13	20.29		
<a href="#">021H26001</a>	2019/11/13	39.17		
<a href="#">001O13001</a>	2019/11/13	96.48		
<a href="#">001O08001</a>	2019/11/13	45.4		
<a href="#">001I33001</a>	2019/11/13	62.02		
<a href="#">001G03006</a>	2019/11/13	206.9		
<a href="#">001E10006</a>	2019/11/13	111.4		

265502 Total Results | Page 1 of 5311

Go to page:  Show 50

**Water Level Explorer**

This search will produce 265502 results.

### Water Level Detail

Filter for Most Recent Water Level Measurements?

Measurement Date:

=  x

**Apply Filter** **Clear All Filters**



# Sample Results Explorer – List & Filters

**Sample Results Explorer**

Applied Filters:

GSA ID	Sample Date	Analyte/CAS #	Concentration	Units	USGS Grouping
<a href="#">125Y33001</a>	2019/11/19		15.5	degrees C	
<a href="#">125Y33001</a>	2019/11/19		2.4	mg/L	
<a href="#">125Y33001</a>	2019/11/19		449	mS/cm	
<a href="#">125Y33001</a>	2019/11/19		7.1	SU	
<a href="#">125Y33001</a>	2019/11/19		355	mV	
<a href="#">007L02002</a>	2019/11/19		16.8	degrees C	
<a href="#">007L02002</a>	2019/11/19		6.2	mg/L	
<a href="#">007L02002</a>	2019/11/19		271	mS/cm	
<a href="#">007L02002</a>	2019/11/19		7.6	SU	
<a href="#">007L02002</a>	2019/11/19		298	mV	
<a href="#">007C34001</a>	2019/11/19		18.1	degrees C	
<a href="#">007C34001</a>	2019/11/19		6.4	mg/L	
<a href="#">007C34001</a>	2019/11/19		257	mS/cm	
<a href="#">007C34001</a>	2019/11/19		7.4	SU	
<a href="#">007C34001</a>	2019/11/19		601	mV	
<a href="#">125LL25001</a>	2019/11/06		16.9	degrees C	
<a href="#">125LL25001</a>	2019/11/06		6.9	mg/L	
<a href="#">125LL25001</a>	2019/11/06		307	mS/cm	
<a href="#">125LL25001</a>	2019/11/06		7.6	SU	
<a href="#">125LL25001</a>	2019/11/06		138	mV	
<a href="#">077S19001</a>	2019/10/23		15.4	degrees C	
<a href="#">077S19001</a>	2019/10/23		10.36	mg/L	

<< < > >> 63117 Total Results | Page 1 of 1263

| Go to page:  Show 50

**Sample Results Explorer**

This search will produce 63117 results.

### Analyte

Analyte/CAS #:

USGS Grouping:

### Sample Detail

Filter for Most Recent Sample Results?

Sample Date:

Concentration:

Submitting Agency:

Media:

# Details Menu 1

Screen From Depth (Feet)	Screen To Depth (Feet)	Screen Material	Casing From Depth (Feet)
			642
			590
			510
			0
678	698	Unknown	
637	642	Unknown	
575	590	Unknown	

Measurement Date	Depth to Water (ft/bls)	Water Level Elevation	Pumping Rate (gpr)
2019/11/14	68.78		
2019/04/23	68.45		
2017/09/25	85.9		
2017/02/28	92.2		
2013/01/01	85		450
2002/10/01	80.1		
2001/10/02	76.58		
2000/10/13	88.02		

Sample Date	Analyte/CAS #	Concentration	Units	USGS Grouping
1995/07/31		3	ug/L	
1995/07/31		0.48	mg/L	
1995/07/31		0.27	mg/L	
1995/07/31		15	mg/L	
1995/07/31		0.13	mg/L	
1995/07/31		0.22	mg/L	
1995/07/31		48.5	mg/L	
1995/07/31		0.2	mg/L	
1995/07/31		0.14	mg/L	



# Details Menu 2

